

playmobil®

Valid from August to December 2023

[illegible]

4-10
YEARS

Gift Sets



71189 Pirate with Cannon Gift Set



70676 Dog Trainer Gift Set



71185 Construction Worker Gift Set



71184 Country Singer Gift Set



71186 Karate Class Gift Set



71187 Go-Kart Racer Gift Set



71188 Plant Scientist Gift Set



1974



PLAYMOBIL 1.2.3 04
PLAYMOBIL 1.2.3 & Disney 05
PLAYMOBIL 1.2.3 AQUA 08

DISCOVER & EXPERIENCE THE WORLD IN PLAY!

There are millions of stories and adventures for you to discover with PLAYMOBIL!

Fire brigade, police, farm, knight's castle ... With PLAYMOBIL you can learn a lot about the world around you. Immerse yourself in a topic, discover new things and have fun inventing your own stories. You decide where the journey goes. Your imagination knows no boundaries!



Did you know?
PLAYMOBIL has been around since 1974!
The first characters laid the foundation for countless stories fueled by children's imaginations.

WHAT PARENTS LOVE ABOUT PLAYMOBIL PRODUCTS:



TRAINING FOR THE SMALLEST EXPLORERS AND BIG ADVENTURERS

In role-playing games with PLAYMOBIL, children can immerse themselves in both real and fantasy worlds, playfully training their language, social and cognitive skills. This encourages creativity and boosts self-confidence. For younger children, PLAYMOBIL 1.2.3 offers a unique level-based approach to learning.

HIGH PLAY VALUE, SUSTAINABLE IDEAS

PLAYMOBIL play worlds make complex connections tangible for children in a playful, fun way. Theme worlds such as Wiltopia and Farm also create awareness of more sustainable materials. Made from innovative material, they represent a first step in the development of sustainable toys from PLAYMOBIL.



*Wiltopia, Horses of Waterfall and Farm: made with more than 80% recycled and bio-based materials on average

LEARN - PLAY - FUN ON MANY CHANNELS

Whether it's funny educational videos with ROBERT, exciting mini-series, informative audio clips, fun games and much more: PLAYMOBIL offers additional learning and play content for most topics.



Have a look at playmobil.com or our YouTube channel TODAY!



PREMIUM QUALITY DEVELOPED IN GERMANY

PLAYMOBIL products have been known for their exceptional durability for almost 50 years. They exceed international safety standards for toys, as independent testing institutes regularly confirm. This guarantees long fun!



Durable: 3 generations have played with this castle.

Camping	10
City Cleaning	12
Daycare	13
School	14
Modern House	16
Hospital	18
Fire Brigade	20
Police	22
Tactical Unit	24
Playmobil COLOR	26
Wiltopia	29
Farm	32
Pony Farm	34
Horses of Waterfall	36
Dollhouse	38
Special Plus	09
Playmo Friends	27
DuoPacks	27
My Figures	40
Starter Packs	41
Air Stuntshow	60
Quads	60
RC Vehicles	61
Figures 23 & 24	66

Princess Castle	42
Princess Magic	44
Adventures of Ayuma	46
Novelmore	50
Dino Rise	54
Dragons: The Nine Realms	56

Asterix	62
Magnum, p.i. Ferrari	68
Porsche	69
Mercedes	70
Ferrari	70
MINI	71
Citroën	71
VW	72
Aston Martin	73
Knight Rider	73
A-Team	73
Back to the Future	73
Naruto Shippuden	74

Advent Calendar	67
-----------------	----

Sustainability	28
----------------	----

Committed to supporting a toddlers' development through play, and to inspire both children and parents with PLAYMOBIL 1.2.3.

Utilises the approach of unique learning stages that focus on individual abilities rather than just the age of the child.

1 EASY START



Starter sets for collecting first play experiences: Touching, recognising & naming

2 FIRST CHALLENGE



Discovering first play features and mastering small challenges

3 LITTLE EXPERT



Discover versatile play features, understand connections & create first stories

Educational features

Safety first

Creative & combinable

Premium quality made in Europe

100% BPA free

Ready to play

Hygienic & easy to clean

Durable play companions

Learn more about the special characteristics of PLAYMOBIL 1.2.3



Playing with PLAYMOBIL 1.2.3 supports the development of the following skills for your child:



Fine motor skills



Language development



Creativity



Social skills



Cognitive understanding

August

Disney
MICKEY
AND FRIENDS



©Disney

Disney
Winnie the Pooh



©Disney. Based on the "Winnie the Pooh" works by A.A. Milne and E.H. Shepard

Re-enact everyday situations with your child



Specific, individual support based on three interconnected learning stages





... GREAT FOR OUTDOOR, POOL & BATH TIME!



SPECIAL PLUS WITH MORE ACCESSORIES FOR ENORMOUS FUN!



70883 Dog Sitter



71167 Man with Bathtub



71168 Researcher with Alligator



71169 Frog Prince



71170 Little Angel & Little Devil



71171 Ballerina



71172 Granny with Cats



71162 Policeman with Dog



71163 Environmentalist



71164 Mechanic



71165 Darts Player



71166 Children with Water Balloons



71161 Pizza Chef



70872 Superhero



70873 Man with E-Scooter



70874 Horse Trainer



70875 Soccer Player with Goal



70876 Child with Monster



70877 Christmas Baker



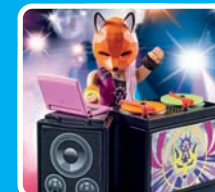
70879 Boxing Champion



70880 Graduate



70881 Mermaids



70882 DJ with Turntables



70601 Bicycle Excursion

24 SETS

Let's go CAMPING!



New 09/2023

71428 Beach Lounger

New 09/2023

71425 Camping.

Table and stool can be folded.

New 09/2023

71423 Caravan with Car.

RC-enabled vehicle (71397 RC unit NOT included), with detachable parts for a better play experience.

New 09/2023

71424 Campsite.

Sanitation building with functioning shower and a water pump.

70088 Family Camper.

Furnished with a kitchenette, sitting area, mini bathroom/toilet and sleeping places. The roof can be removed for ease of play.

New 09/2023

71427 Family Barbecue

New 09/2023

71426 Mountain Bike Tour.

Trailer can be attached to the large mountain bike, and includes lots of equipment.

70614 Crêpe Cart.

The crêpes can be topped with a banana, rolled up and held by a figure.

71043 Catamaran.

Floating catamaran with swim ring and lots of accessories for the perfect summer trip.

71190 Adventure Zoo.

In the adventure zoo, the animals live in spacious enclosures. Visitors can observe the animals up close via the observation path. Can be expanded with item 71192 (sold separately).

New 09/2023

71191 Petting Zoo.

With various habitat elements, the petting zoo can be designed as desired. Includes an observation platform and functioning animal food dispenser.

71192 Outdoor Lion Enclosure.

From the observation path, father and son have a good view of the lions in the outdoor enclosure. The path can be combined with the Adventure Zoo (71190, sold separately).

71192 Outdoor Lion Enclosure.

From the observation path, father and son have a good view of the lions in the outdoor enclosure. The path can be combined with the Adventure Zoo (71190, sold separately).

An exciting day at the Zoo!

LIMITED EDITION!*

PROMO-PACK

New 10/2023

71367 Wedding Photo Booth

New 10/2023

71366 Honeymoon Speedboat Trip

New 10/2023

71365 Wedding Reception

71042 Music Band

LIMITED EDITION!*

PROMO-PACK

HEROES OF THE CITY

Welcome to the busy world of city cleaning! The team is out to keep our urban living spaces clean and fresh. They work tirelessly to clear the streets of dirt and debris, while street sweepers and glass recycling trucks keep our city tidy.



71433 Street Cleaner with e-Vehicle.
The rubbish can be transported on the loading area, with many accessories.



71435 Mobile Toilet



71434 Street Cleaning Team.
Rubbish bin can be pushed by the figure using the handle and the lid can be opened.



71432 Street Sweeper.
Tailgate can be opened and the waste container can be tilted. The sweeper brushes rotate to clear leaves and debris.



71431 Glass Recycling Truck with Container.
Truck with trailer hitch, foldable loading area, and a swiveling and extendable crane boom.



5573 Mother with Twin Stroller



70284 Mother with Children.
Includes a stroller and bike.



70282 Toddler Room.
Can be combined with 70280 Rainbow Daycare (sold separately).



70280 Rainbow Daycare.
Equipped with children's table, chairs, play area, kitchen, sanitary area and working doorbell. 2 x AAA batteries required.



70281 Adventure Playground.
The adventure playground offers many opportunities for play: climb, seesaw and slide.

FUN AND PLAY IN THE DAYCARE!



New
07/2023



71332 Traffic Education

SCHOOL IS FUN!

Another exciting day in the new large school from PLAYMOBIL! In the modern school building, everyone can help students fulfill their potential. In addition to the classic school subjects, there are also interesting new subjects on the timetable. You can work up a sweat during sports lessons or in the playground, and there are delicious snacks offered in the lunch kiosk. After a fun day at school, the bus takes all the children home safely.



71331 Climate Science Classroom.
Learn how to separate waste and features a puzzle with climate protection tasks. A great extension to the Large School.



71329 City School Bus.
Space for 5 figures, side door swings outwards, removable roof and trailer hitch. Ramp at the rear for wheelchair users to board the bus.



71333 Lunch Kiosk



71330 Virtual Classroom.
With working projector and screen, and many accessories. 2 x AAA batteries required.



71328 Gym Extension.
With basketball hoop and shelves for storage. The gym can be attached to the Large School.



71327 Large School.
Wheelchair-accessible school that includes labels that can be painted with water, a green roof terrace and lots of accessories.

43 x 39 x 36 cm

WELCOME TO OUR MODERN HOME



70986 Modern House Floor Extension.
With fitness room, workshop, utility room and storage room.
With many accessories. 3 x AAA batteries required.



70990 Grandparents with Child



9266 Modern House.
Accommodates five room sets, with doorbell and outdoor lighting. 2 x AAA batteries required.



70987 Pool Party.
Featuring a water slide, fillable pool, sizzling BBQ, luminous lanterns and other accessories. 2 x AAA batteries required.



9271 Bedroom.
Furnished with a bed, make-up mirror, stool and wardrobe with clothes to change. 1 x AAA battery required.



70989 Family Room.
With working light column. 1 x AAA battery required.



9269 Kitchen.
Equipped with a fridge, oven and dishwasher, modern cooking island and lots of kitchen utensils.



70988 Deluxe Teenager's Room.
With a house-shaped bed, desk, saxophone and many more accessories.



9268 Bathroom.
Equipped with a shower, toilet and double washbasin, as well as a fitness bike. 1 x AAA battery required.

Heroic action on the ground and in the air!

Getting better is easy in the Large Hospital. In its bright, friendly rooms and state-of-the-art equipment, the helpful staff will ensure that patients are looked after and nursed back to health quickly. A versatile play world for children who want to dive into the role of doctors and paramedics.

- 1 70193 Patient in Wheelchair
- 2 71245 Paramedic with Patient
- 3 71244 Medical Team



71202 Ambulance with Lights & Sound.
With lots of accessories to take care of the injured person, and a light and sound module. 2 x AAA batteries required.



71203 Medical Helicopter.
Modern transport for the injured hiker, complete with rescue stretcher and spinning rotor blades.



71204 Rescue Cart.
Includes a rescue stretcher and sufficient storage space for supplies.



71205 Rescue Motorcycle with Flashing Light.
With flashing lights (batteries included) and a wide range of medical equipment in the doctor's case.



70192 Children's Hospital Room.
Includes reusable plasters and bandages with fun motifs.



70190 Large Hospital.
Comes with many treatment equipment, a lift to the upper patient rooms, many accessories and bandages to apply. 1 x AAA battery required.

70 x 31 x 33.5 cm

THE FIRE BRIGADE IS HERE TO SAVE THE DAY!

The alarm buzzer beeps and the firefighters are ready immediately. "A house on Main Street is on fire!" The fire engine moves out and the helicopter takes off to the emergency location.

4-10
YEARS



9468 Firefighters with Water Pump.
Extinguishes fire with real water.



9464 Fire Engine.
Water arrows can be shot with the working water cannon. 2 x AAA batteries required.



9462 Fire Station.
Two garages large enough for the engines to pass through, a helicopter with helipad, and working fire alarm. 2 x AAA batteries required.



9463 Fire Ladder Unit.
RC-capable vehicle with extendable ladder, lights and sounds (RC unit sold separately). 2 x AAA batteries required.



9466 Fire Truck.
With cable winch, extinguishing foam cannon as well as lights and sound. 3 x AAA batteries required.



71195 Fire Rescue Helicopter.
Water cannon with water projectiles.



71194 Fire Rescue Truck.
With cable winch, fillable water tank and functioning water pump unit.



71193 Take Along Fire Station.
Take along case with operations centre, fire motorbike and helicopter landing pad.



* Only while stocks last.

Emergency call at the command centre



7066 Porsche 911 Carrera 4S Police.
With police light and sound (1 x AAA battery required) and many accessories. Flashing front, rear and dash-board lights (3 x AAA batteries required) with removable roof.



70572 Bank Robber Chase.
Police motorcycle with fold-out stand and a key for the ATM machine.



6924 Police Roadblock.
Police control unit with police dog and equipment to stop criminal vehicles.



6919 Police Headquarters with Prison Cell.
Transparent film for fingerprints, lockable gun cabinet, helipad and lots of accessories.



70669 Police Figure Set.
3 police figures equipped with police accessories.



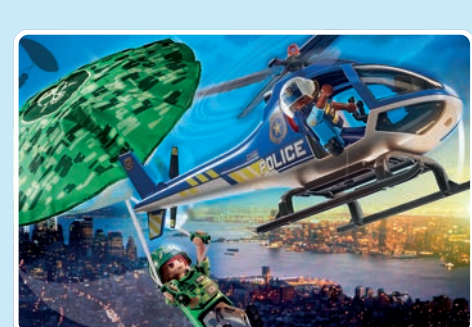
6920 Police Car.
Features lights and sounds (1 x 9V + 4 x AA batteries required), two different siren sounds and removable roof.



70568 Prison Escape.
Prison cell with breakout wall, can be locked from the outside, with lots of police accessories.



70575 Helicopter Pursuit with Runaway Van.
Equipped with grappling missile and the getaway vehicle number plates can be changed.



70569 Police Parachute Search.
Manually spinning rotor blades and a parachute for the figure.

URGENT CALL FOR THE EMERGENCY SERVICES

The Tactical Unit is always called when the PLAYMOBIL police request additional support. This themed world contains everything that little junior police officers need for a successful mission.



71147 Tactical Unit - Multit-Terrain Quad.
Transformable quad with snap-on floats.



71146 Tactical Unit - Figure Set



71149 Tactical Unit - Rescue Aircraft.
Light and sound module, storage compartment in the helicopter floor, cable winch and tension belts for securing loads. 2 x AAA batteries required.



71144 Tactical Unit - All-Terrain Vehicle.
All-terrain vehicle features doors that can be opened, with light and sound module. 1 x AAA battery required.

5-10
YEARS

5-10
YEARS



70780 Police Jet with Drone.
Jet and drone are equipped with firing cannons, and the drone has movable gripper arms.



70779 Police Seaplane.
The plane and dinghy float, and the figure can abseil down the rope.



5159 Underwater motor in blister.
1 x AA battery required.



70781 Police Parachute with Amphibious Vehicle.
With functional parachute, and the amphibious vehicle can be equipped with the 7350 Underwater Motor (sold separately).

A clever villain has built a super drone and now makes the city unsafe alongside his accomplice on the boat. But the two criminals didn't expect the PLAYMOBIL police and their cool vehicles and jets. An exciting chase in the air and on water begins.



70782 Police Jet Pack with Boat.
The dinghy floats and can be upgraded with the 7350 Underwater Motor (sold separately).

EXCITING POLICE ACTION



COLOR

New
10/2023

5-12
YEARS

Let's get
colourful!!!



71372 PLAYMOBIL Color: Fashionboutique.
Includes many accessories for colouring, including 4 thin and 1 thick pen, which are water based for easy removal.



71374 PLAYMOBIL Color: Fashion Show Designer.
It comes with 1 dress and some accessories to colour, 2 thin pens which are water based for easy removal.



71373 PLAYMOBIL Color: Dressing Room.
Comes with four different sets of clothes to change into and colour, including 3 thin pens which are water based for easy removal.



71377 PLAYMOBIL Color: Motorbike.
Motorbike and driver can be coloured, and includes 2 thin pens which are water based for easy removal.



71376 PLAYMOBIL Color: Hot Rod.
Hot Rod and driver can be coloured, and includes 2 thin and 1 thick pen which are water based for easy removal.

EASY TO WASH FROM...



CLOTHES

WALLS

HANDS

Crayola

© 2023 Crayola.

PLAYMO-FRIENDS

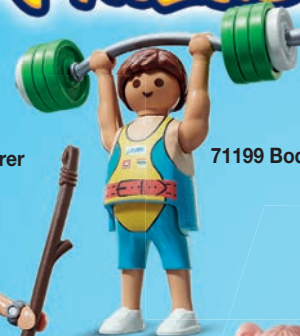
Add to your collection
or give as a gift -
new
PLAYMO-Friends
have arrived!

4-10
YEARS



71198 Violinist

71197 Adventurer



71199 Bodybuilder



71196 Maintenance Person



70976 Queen



70975 Barbarian



71201 Traffic Policeman



71200 Warrior



70974 Florist



70973 Shepherd

70972 Morning Routine



70977 Kickboxer

4-10
YEARS



70822 DuoPack Policeman and Street Artist



70821 DuoPack Royal Couple



70823 DuoPack Doctor and Police Officer



70824 DuoPack Air Stunt Show

DuoPacks

Twice the
fun!



71208 DuoPack Ice Prince and Princess



71207 DuoPack Firefighters



71206 DuoPack Adventurer with T-Rex



71209 DuoPack Roller Hockey

OUR STEP TOWARDS A MORE SUSTAINABLE FUTURE

With Wiltopia, Horses of Waterfall and our new Farm products, there are now three series on the market that are produced from **80% SUSTAINABLE MATERIAL** on average.

Thanks to an intensive development process, we can achieve the high stability and durability qualities, as well as fulfill the high **safety standards** that **PLAYMOBIL** stands for, in a more sustainable way. With our motto **"LET'S ACT MORE RESPONSIBLY"** we continue to work on improving our processes - for the protection of our planet and the future of our children.



OUR SEAL FOR MORE SUSTAINABILITY

In the future, our new seal will identify all our products that are made from 80% sustainable materials on average. These are composed of recycled and **BIOBASED PLASTICS**. Foil bags made from **100% recycled plastics** are used for packaging. Shipping, retail packaging, and building instructions are made from almost **100 percent recycled cardboard** or recycled paper.

4-10
YEARS

WILTOPIA WELCOME TO THE SAVANNAH!



71293 Wiltopia - Cross-Country Vehicle with Lions.
Roof attachment with removable tent. The lion's wound disappears when you gently rub the area.



71296 Wiltopia - Ostrich Keepers.
The legs of the ostrich can be removed for sitting on the nest.

The Palmer family start their research trip to the savannah.

With their specially selected equipment, they are well-prepared for every situation. On their long journeys through the savannah, they experience wild animals in their natural habitat and give them medical help where necessary.

1 71295 Wiltopia - Animal Photographer.
With a great zebra costume for the photographer, a zebra and a zebra foal. Figure with interchangeable face.



71142 Wiltopia - Tropical Jungle Playground.
Integrated ball track Cave with hiding place. Playground with swings and climbing net.



71143 Wiltopia - Paddling Tour with River Dolphins.
River dolphins float in water.

2 71294 Wiltopia - Elephant at the Waterhole.
The elephant can draw water up through its trunk and squirt it out again.

* Only while stocks last.



*Wiltopia-Products:
made with more
than **80%** recycled
and bio-based
materials on average

New
09/2023



INCLUDING ACCESSORIES, ANIMAL
KNOWLEDGE CARD TO COLLECT AND
EXCITING AUDIO CONTENT



71063 Fawn

71291 Beaver

71065 Squirrels

71050 Ibex

71052 Moose

71070 Young Seal

71073 Young Polar Bear

71053 Polar Bear

71061 Emperor Penguin

71066 Raccoon

71059 Eagle

71287 Alligator

- 1 71008 Wiltopia - Research Tower with Compass
- 2 71011 Wiltopia - Animal Rescue Quad
- 3 71010 Wiltopia - Boat Trip to the Manatees

- 4 71009 Wiltopia - Rainforest Nightlight
- 5 71012 Wiltopia - Anteater Care
- 6 71007 Wiltopia - Animal Care Station

71062 Alpaca

71064 Young Alpaca

71069 Meerkats

71060 Panda

71049 Young Elephant

71048 Giraffe

71054 Lion

71289 African Donkey

71068 Young Dolphin

71058 Giant Tortoise

71051 Dolphin

71288 Sea Lion

71290 Kangaroo with Joey

71292 Koala with Baby



DISCOVER THE AMAZON!

*Wiltopia-Products:
made with more
than 80% recycled
and bio-based
materials on average

Country

THERE'S ALWAYS SOMETHING HAPPENING DOWN ON THE ORGANIC FARM!

4-10 YEARS



71253 Beekeeper.
The beekeeper lovingly takes care of the bees in the hive. With the smoker she calms the bees so that she can harvest their delicious honey.



*Country Bio-Farm-Products: made with more than 80% recycled and bio-based materials on average



- 1 71309 Cat Family
- 2 71252 Rabbit Hutch
- 3 71251 Alpaca Hike
- 4 71308 Hen House

New 07/2023



71304 Large Farm.
Extendable and rotatable loading crane, charging station for the large tractor and solar panels on the roofs.

New 07/2023



71305 Large Tractor with Accessories.
Hinged roof, and includes trailer couplings at the front and rear of the tractor, comes with an e-charging station.



71250 Country Farm Shop.
With many fresh organic products, bottle vending machine and bike with trailer.



71249 Harvester Tractor with Trailer.
With trailer hitch. The loading area can be tipped forward for unloading.



71306 Farmers Cargo Bike.
Removable basket. 2 silicone straps secure the bottle crates and the freshly bought vegetables.



71307 Animal Enclosure.
Comes with lots of farm animals: cow with calf, sheep with lamb, goat with kid, and the new pot-bellied pigs.



71248 Farmhouse with Outdoor Area.
Fully equipped living and kitchen area, many farm animals, and the cow has a flocked effect.



Country

Outdoor memories with horses



70996 Horse Riding Tournament. Convertible obstacles for show jumping, includes a podium for the award ceremony and many other accessories.



71239 Picnic Adventure with Horses. Comes with picnic snacks, riders and horses with accessories.



70519 Pony Café. Children's figures can ride the ponies.



70511 Car with Pony Trailer. Vehicle and trailer have a removable roof, and the trailer has a folding ramp.

1 70999 Horse Trio

2 71000 Icelandic Ponies with Foals

3 70998 Pony Wagon

4 71242 Riding Lessons

5 70997 Pony Farm Birthday Party

6 71243 Horse with Foal



71238 Riding Stable. Horse stall can be locked and includes horse with foal.



71240 Riding Stable Extension. Riding stable and fence can be used as an extension or combined with existing stables and fences.



71237 Horse Transporter with Trainer. Ramp can be opened at the side, the roof elements can be removed. Features two sleeping spaces and many accessories.



70995 Horseback Riding Lessons. Two lockable horse stalls, training area, fence elements and other accessories.



6927 Pony Farm. Ponies are housed in a single and a double stall, including various halters.



71241 Horse Veterinarian. Comes with a wide range of accessories for equine medical treatment.

LIMITED EDITION!*

* Only while stocks last.



PROMO-PACKS

Fun and friendship with the horses

For the five horse friends, Amelia, Isabella, Zoe, Ellie and Ben, Waterfall Ranch is the perfect place to home, care for and train their beloved horses, Whisper, Lioness, Blaze, Sawdust and Achilles.

The gang spends every free minute with their horses and visit the ranch as often as they can. There is always an exciting adventure waiting for you here! Explore the beautiful Waterfall region with them!



71357 Farrier with Horse

New

*Horses-of-Waterfall-Products: made with more than 80% recycled and bio-based materials on average



71353 Amelia and Whisper Horse Stall Playset. Features a horse with combable hair, and includes a foal, alpaca and a dog, fence elements and lots of accessories.



71354 Isabella and Lioness Washing Station Playset. Features a horse with combable hair, horse shower with working water pump and many accessories.



71352 Riding Therapy and Veterinary Practice. With aqua treadmill and many accessories.



71355 Zoe and Blaze Jumping Arena Playset. Features a horse with combable hair, accessories for groundwork training and height-adjustable hurdles.



71358 Feeding Time with Ellie and Sawdust



71356 3 Horse Set: Morgan, Quarter Horse & Shagya Arab. Includes 3 horses and many accessories.



71351 Waterfall Ranch. Variable fence elements, fully-equipped rooms and includes lots of horse accessories.

New

New 09/2023

New 09/2023

My large dollhouse



67,5 x 36 x 61,5 cm



70205 Large Dollhouse.
With rooftop terrace, functioning doorbell and letterbox.
Perfect combinable with the six comfortable rooms for furnishing
(70206-70211). 2 x AAA batteries required.



70985 Take Along Modern Dollhouse.
With a spacious kitchen, comfortable living room, bathroom and master bedroom with baby cradle.



70211 Bathroom with Tub.
Toilet with toilet attachment for child figures, and a towel for the male bathing figures.



70210 Nursery.
With rattle and teething ring for the baby.



70209 Teenager's Room.
Sofa bed converts to bed and comes with a real paper notepad.



70208 Bedroom with Sewing Corner.
With functioning bedside lamps.
3 x AAA batteries required.



70207 Comfortable Living Room.
With fireplace, sofa bed, armchair and sideboard.
2 x AAA batteries required.



70206 Family Kitchen.
Baking in the family kitchen with appliances and accessories. Kitchen equipment includes oven, dishwasher and freestanding fridge. With many accessories.

MY FIGURES

BE CREATIVE
BE UNIQUE
BE COLOURFUL

CREATE
YOUR FIGURE

71399
My Figures:
Stuntshow.
Figures can be put
together however
you like - design
your own character!
Expands your Stunt
Show play world.



1.000+ COMBINATIONS
OF FIGURES POSSIBLE

Create your own character and have fun!



71400 My Figures: Rescue Team.
Build your own character from the themes of fire
rescue, medical and police.
Expands your City Action play world.



71402 My Figures: Life in the City.
Build your own character from everyday life, exactly
how you like.
Expands your City Life play world.



71401 My Figures: Fashion Show.
Figures can be put together however you like - design
your own fashionista!
Expands your City Life play world.



70979 My Figures: Island of the Pirates



70981 My Figures: Magical Dance



70980 My Figures: Rescue Mission



70978 My Figures: Horse Ranch

5-10
YEARS

STARTER
PACK

15
SETS!



70818 Starter Pack Pediatrician



71379 Starter Pack Mermaids



71380 Starter Pack Vegetable Garden



70908 Starter Pack Bank Robbery



71077 Starter Pack Wedding
Ceremony



71078 Starter Pack Hot Rod



71079 Starter Pack Hang Glider



71254 Starter Pack Pirate with Rowing
Boat



71255 Starter Pack Special Forces
and Thief



71256 Starter Pack Stunt Show



71257 Starter Pack Rescue with
Balance Racer



71258 Starter Pack Daycare



71259 Starter Pack Horse Farm



71378 Starter Pack Triceratops
Release Team



71381 Starter Pack Police

4-10
YEARS

New
12/2023

New
12/2023

New
12/2023

New
12/2023

41

The Large Princess Castle

Princesses from all over the world come together in the magical castle.



70454 Dressing Room.
With different clothes to try, a bath tub, room separator and large mirror.



70455 Dining Room



80 x 47 x 82 cm

70447 Large Princess Castle.
The castle has spacious rooms, elegant open staircases leading up to the tower room and large opening gates.



70450 Riding Lessons.
Figures can sit on the horse using the removable saddle.



70449 Horse-Drawn Carriage.
Carriage can be detached from the horses.



70453 Royal Bedroom



70451 Castle Bakery.
With lots of accessories for decorating cakes.



70961 Princess Picnic with Foal
* Only while stocks last.



New
09/2023

4-10
YEARS

Dreamy Adventures Await!

High up in the clouds, above the endless expanses of the Magical Realm, hovers the Rainbow Castle.

It is home to the good-natured rainbow princesses. The princesses, along with sisters Talissia and Nelia, will one day be queens of the cloud kingdom - but until then, they have made it their mission to help and do good for as many magical and non-magical inhabitants as possible. Will you help them?



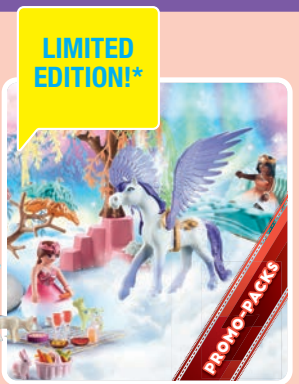
71359 Rainbow Cloud Castle.
Removable nightlight, soft skirts for the princesses, ring for the child to wear and stickers to decorate. 3 x AAA batteries required.



71361 Pegasus with Rainbow Cloud



71362 Cloud Slumber Party



71246 Picnic with Pegasus Carriage



71364 Rainbow Spinning Top with Princess



71363 Cloud Trip with Pegasus Foals



71408 Cloud Dressing Room.
Soft skirts for the princess to wear and stickers to decorate.



71360 Baby Cloud.
Soft skirts for the princess to wear and stickers to decorate.



7-12
YEARS

Welcome to Ayuma!

A mystical world full of magic!

In the magical fairy forest, Crystal Fairy Elvi, Forest Fairy Leavi and Knight Fairy Josy have magical adventures together with the Bat Fairies and their other friends. The new Moon Fairies cause some confusion and the Mist Mage poses a danger to Ayuma. But thanks to their courage and the loyal spirit animals at their side, the fairy friends can do anything!

Watch it on **YouTube**
and **YouTube Kids**



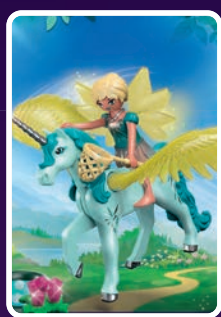
70799 Community Tree.
With star projector. 3 x AAA batteries required.



70800 Magical Energy Source.
With light module. 4 x AAA batteries required.



70804 Fairy Hut



70809 Crystal Fairy with Unicorn



70825 Bat Fairy House



70808 Spring Ceremony



70807 Bat Fairy Ruins.
With light module. 1 x AAA battery required.

*It will be
Magical!*

Leavi, Elvi and Josy now
available as individual figures
with sticker and trading card!

Watch it on **YouTube**
and **YouTube Kids**

- 1 71180 Forest Fairy Leavi
- 2 71181 Crystal Fairy Elvi
- 3 71182 Knight Fairy Josy



12 x 8 x 18.5 cm / 16 x 16 x 13 cm

71215 Mystical Leaf Trap.
Help the fairies catch the mist! The trap can be opened and closed, while the luminescent lantern provides a magical atmosphere.



71235 Abjatus with Knight Fairy Hildi.
Abjatus, fused with his soul animal, has magical luminescent wings.



71350 Forest Fairy and Bat Fairy with Soul Animals



71349 Moon Fairy House



71236 Crystal and Moon Fairy with Soul Animals



71033 Moon Fairy with Soul Animal.
The Moon Fairy cares for her soul animal, the ostrich.



36 x 23 x 17 cm

71032 Moon Fairy Lake

Watch it on
YouTube and
YouTube Kids

NOVELMORE

THE KNIGHT
ADVENTURES
CONTINUE!



- 70672 Burnham Raiders Set
- 70671 Novelmore Knights Set
- 70904 Novelmore Dragon Attack
- 70223 Temple of Time



70221 Burnham Raiders' Fortress.
With firing cannons and dragon cage. The castle has another entrance and dungeon in Fire Mountain.



70641 Burnham Raiders' Fire Ship.
With a bow that can be used as a battering ram or a grappling hook.



70642 Novelmore Knights' Airship.
With integrated cannons.



70220 Grand Castle of Novelmore.
With a sophisticated castle gate, integrated catapult, ballista and elevator.



71023 Sal'ahari Sands - Sand Stormer.
With a large bellows cannon, innovative sponge bullets and a zip line.



71027 Sal'ahari Sands - Mammoth Attack.
With removable mammoth saddle and many accessories.



71025 Sal'ahari Sands - Thunder Throne.
With quick shot function and slime catapult.

NOVELMORE

DO BATTLE IN THE GREAT NOVELMORE JOUSTING TOURNAMENT!

In the ancient archives of Novelmore, the Novelmorsians and Burnham Raiders come across a prophecy: The prophecy tells of the so-called Guardian, a mighty warrior who wields the fabled Guardian Sword - a weapon that guarantees the realm of its wielder protection and security for all time. To find the Guardian, they hold the Tournament of the Guardian. Here the knights of Novelmore and Burnham can prove and assert themselves in the most diverse disciplines.



71211 Novelmore - Dario's Glider.
With two firing cannons, ejector seat and ejectable barrel.



71297 Novelmore - Medieval Jousting Area.
With target and barrel targets.



71298 Novelmore vs. Burnham Raiders - Tournament Arena.
With firing cannons, targets, trapdoor, prison, opening elements and cage for the Guardian Sword.



71300 Novelmore - Combat Robot.
With posable robotic arms and legs, firing cannon and accessories. Figure fits into the robot.



71299 Burnham Raiders - Battering Ram.
With ejector seat, firing cannon, break-off rear wheels and detachable cage.



71214 Novelmore - Combat Training.
With a puppet and numerous accessories.



71213 Burnham Raiders - Fire Knight.
With fire horse and weapon stand for suitable equipment.



71212 Novelmore vs. Burnham Raiders - Duel.
With targets and pivoting, firing cannons.



71210 Novelmore vs. Burnham Raiders - Battle Arena.
With working catapult, dragon with space for one figure, and a movable, firing cannon.



- 71301 Novelmore - Arwynn with Invincibus
- 71302 Novelmore - Dario with Tools
- 71303 Novelmore - Gwynn with Combat Equipment

4-10
YEARS



1 70929 Dino Mine Missile

2 70930 Mine Cruiser



70928 Dino Robot.
Opens and features a hidden, working cannon.



70925 Dino Mine.
With mechanical traps, elevator for transporting vehicles, adjustable points and a dinosaur rescue function.



71261 T-Rex.
With firing cannons, transport box for stones on the dino's back and detachable armour.



71263 Dimorphodon.
With adjustable catapult for throwing stones, figure seat and detachable armour.



71260 Spinosaurus.
With a swiveling, firing cannon, detachable barrel, transport net and detachable armour.



71262 Triceratops.
Features pivoting, firing cannons with grappling hooks and detachable armour.

NEW ENEMIES FOR TEAM DINO RISE!

New dinosaurs are in danger
in a secluded rainforest!



1 71265 Baby Spinosaurus

2 71264 Deinonychus



DREAMWORKS DRAGONS THE NINE REALMS

EXCITING PLAYSETS
BASED ON THE ANIMATED
SERIES



71084 Dragons: The Nine Realms - Icaris Lab
with Tom's mother Olivia, lab worker and Terrible Terror dragon.



71085 Dragons: The Nine Realms -
Icaris Quad & Phil
with D'Angelo's father Phil and Terrible
Frights dragon.



71080 Dragons: The Nine Realms - Wu & Wei with Jun
includes Jun's brother Eugene.



71081 Dragons: The Nine Realms - Thunder & Tom
with shooting and light-up functions, fast food, drone
and treasure.



71083 Dragons: The Nine Realms - Feathers & Alex
with hi-tech accessories.



71082 Dragons: The Nine Realms - Plowhorn & D'Angelo
with crystal rock to blast.

LIMITED EDITION!*

PIRATES AHoy!

4-10 YEARS

4-10 YEARS

70962 Pirate Treasure Island with Rowboat. With a firing cannon.

PROMO-PACK

* Only while stocks last.



71369 Meteoroid Destroyer. With astronaut, swiveling articulated arm and firing cannons to defend against the meteoroid.

New 10/2023



71370 Mission Space Drone. With astronaut equipped with jet pack and firing cannons to destroy the meteoroid.

ON THE CONSTRUCTION SITE

... there is so much to do!

4-10 YEARS

LIMITED EDITION!*

71045 Road Construction. With excavator and barrier signs.

PROMO-PACK

* Only while stocks last.

LIMITED EDITION!*

* Only while stocks last.



71368 Mission Space Shuttle. With two astronauts, firing cannons, light effects for the propulsion engines and lighting in the interior. 3 x AAA batteries required.

PROMO-PACKS

AIR STUNT SHOW

IT'S TIME TO TAKE OFF!

4-10 YEARS

4-10 YEARS

LIMITED EDITION!*



71044 Stuntshow Racer.
The driver of the stunt show racer celebrates the race victory in style with a trophy.

* Only while stocks last.



70831 Air Stunt Show Phoenix Biplane.
With five different engine sounds, and pylons for the course. 2 x AAA batteries required.



70832 Air Stunt Show Eagle Jet.
With rotating engine turbine in the fuselage, and pylons for the course.

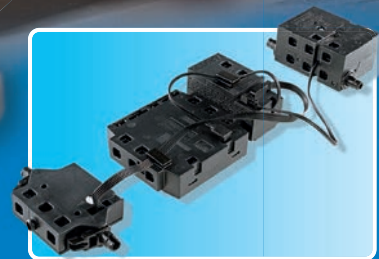
City Life

3,2,1 GO!

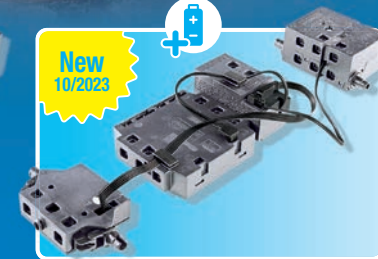
New 10/2023



71430 Rally Car.
RC-capable off-road pickup with extendable ramp. (71397 RC unit sold separately)



6914 Remote Control Set 2.4GHz.
For upgrading all PLAYMOBIL RC-compatible vehicles.



71397 Bluetooth RC Module Set.
RC unit, to be used with all compatible PLAYMOBIL vehicles.

QUAD-ACTION

71039 Racing Quad



71040 Beach Patrol Quad



71092 Police Quad



71090 Fire Rescue Quad

71429 Towing Service.
RC-enabled vehicle with flashing light. Car, motorcycle and go-karts can all be winched and carried on the back of the vehicle. (71397 RC unit sold separately)



New 10/2023

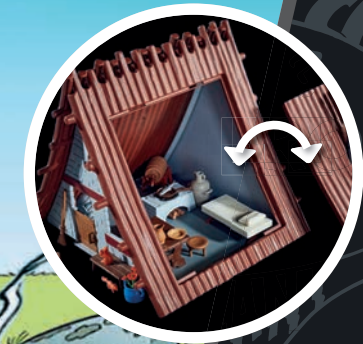
PROMO-PACKS

PROMO-PACKS

Astérix®



70931 Asterix: The Village Banquet.
Partially removable roof, rotating campfire skewer and banquet table with space for 18 Gauls.



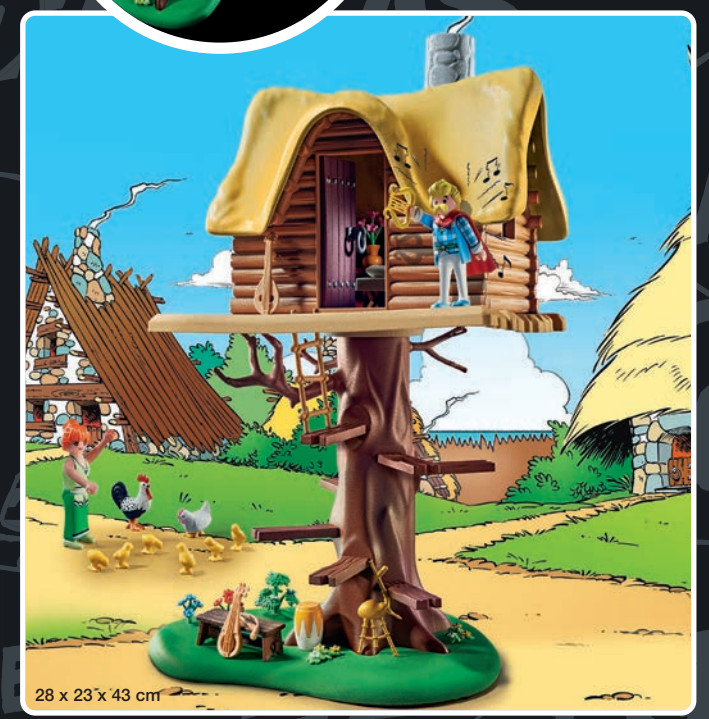
70934 Asterix: Roman Troop.
With their shields, the four Roman soldiers can form the "turtle formation".



71160 Asterix: Wild Boar Hunting.
With tilting tree.



70933 Asterix: Getafix with the Cauldron of Magic.
With Roman spy Caligula Minus.



71016 Asterix: Cacophonix with Treehouse.
With a partially removable roof on the tree house.

28 x 23 x 43 cm

ASTERIX® OBELIX® IDEFIX® © 2023 LES ÉDITIONS ALBERT RENE / GOSCINNY-UDERZO

New



71266 Asterix: Hut of Unhygienix.
With partially removable roof, Fishmonger Unhygienix and his wife Bacteria, and accessories.

40 x 24 x 17 cm



70932 Asterix: Hut of the Vitalstatistix.
With partially removable roof.

37 x 30 x 25 cm



New



71268 Asterix: Edifis and the Battle of the Palace.
With stackable pillars and stones, working catapult, Dogmatix, Obelix, Edifis and Romans with turning heads.

Asterix®

New



71269 Asterix: Artifis and the Poisoned Cake.
With removable pieces of cake, Asterix, Cleopatra's taster, Artifis and his helper Krukut.

New



71270 Asterix: Caesar and Cleopatra.
With leopard and many accessories.





Magnum, p.i.

5-99
YEARS

5-99
YEARS



New
08/2023

71343 Magnum, p.i. Ferrari 308 GTS Quattrovalvole
The iconic Ferrari 308 GTS Quattrovalvole from the well-known 80s crime series Magnum, p.i.. With many details such as lifting headlights at the front and an opening boot at the rear. Includes Thomas Magnum, T.C., Rick and Higgins.



© Universal City Studios LLC. All Rights Reserved.
Produced under license of Ferrari S.p.A.

PORSCHE



70923 Porsche 911 Carrera RS 2.7
The first sports car for the road, with front and rear spoiler. Equipped with figures and accessories for a sporty road trip over winding country roads.



70765 Porsche Mission E
The impressive Porsche Mission E with integrated remote control unit brings electric driving to your home and makes the dream of driving a Porsche come true. 4 x AAA batteries required for lights, 3 x AAA batteries required for remote control.



+RCMODUL

Hergestellt mit Zustimmung der Dr. Ing. h.c. F. Porsche AG.



5-99
YEARS

5-99
YEARS



70922 Mercedes-Benz 300 SL
The sports car icon from the 1950s with the legendary gullwing doors, equipped with figures and accessories in a 1950s racing scene.

"Mercedes-Benz", the three-pointed star in a ring, and the design of the enclosed product are the intellectual property of Mercedes-Benz Group AG. They are used by geobra Brandstätter Stiftung & Co. KG under license.



70921 Mini Cooper
The cult car and space miracle from Great Britain. The style icon complete with matching figures and accessories from the 70s London scene.

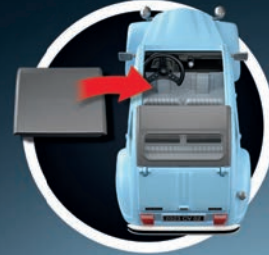
MINI trademarks used are licensed by BMW AG.



71020 Ferrari SF90 Stradale
Ferrari's series production supercar now in PLAYMOBIL scale with figures, removable roof and cool light effects for the headlights and dashboard. 3 x AAA batteries required.



Produced under license of Ferrari S.p.A. The name FERRARI, the PRANCING HORSE device, all associated logos and distinctive designs, including the design of the Ferrari cars, are property of Ferrari S.p.A.



70640 Citroën 2 CV
The iconic Citroën! Equipped with figures and accessories for a trip across the country. With sticker sheet and interchangeable headlights, that can be customised.



Official Licensed
Product



70176 Volkswagen T1 Camping Bus
The iconic camper, ideal for an adventure trip. Fully equipped with a seating area, mini-kitchen, sunbathing area and plenty of storage space.

As individual as you!
Design your own Volkswagen from PLAYMOBIL:
vw-designer.playmobil.com



70177 Volkswagen Beetle
Equipped with a roof rack for a family trip to the beach.

Trademarks, design patents and copyrights are used with the approval of the owner Volkswagen AG.

5-99
YEARS

5-99
YEARS



KNIGHT RIDER

"RIGHT AWAY MICHAEL"

Michael Knight

The A-Team TM & © 20th Century Studios



70750 The A-Team Van
The A-Team iconic vehicle with extensive interior and the characters Hannibal, B.A., Face and Murdock.

© Universal City Studios LLC and Amblin Entertainment, Inc. All Rights Reserved.



70317 Back to the Future DeLorean
Marty McFly and Doc Brown with outfits from 1985. With plutonium case, skateboard, remote control and Einstein. 2 x AAA batteries required.

70924 Knight Rider - K.I.T.T.
K.I.T.T. - the iconic vehicle from the classic 80's series, complete with electronic functions and detailed interior design. Touch the bonnet to hear original voices from K.I.T.T. and operate the scanner light. Includes Michael Knight, Devon, Bonnie and other accessories. 2 x AAA batteries required.

GOLDFINGER, 007 and related James Bond Indicia © 1962-2023 Danjaq and MGM. GOLDFINGER, 007 and related James Bond Trademarks are trademarks of Danjaq. All Rights Reserved. "Aston Martin" and the Aston Martin "wings" logo are trade marks of Aston Martin Lagonda Limited



70578 James Bond Aston Martin DB5 Goldfinger Edition
James Bond's Aston Martin DB5 from Goldfinger (1964) with authentic gadgets like the passenger ejector seat and rotating license plates. Featuring James Bond, Auric Goldfinger, Oddjob and one of Goldfinger's henchmen.

© Universal City Studios LLC. All Rights Reserved.

For all anime fans, there are favorite NARUTO SHIPPUDEN heroes to collect. Recreate iconic moments from the series, and invent creative scenes of your own.

ナルト

71096
Naruto

サスケ

71097
Sasuke

サクラ

71098
Sakura

カカシ

71099
Kakashi

イルカ

71113
Iruka

ヤマト

71105
Yamato

角都

71102
Kakuzu

シズネ

71115
Shizune

綱手

71114
Tsunade

飛段

71106
Hidan

トビ

71101
Tobi

鬼鮫

71117
Kisame

ナルト

71100
Naruto Sage of the Six Paths Mode

我愛羅

71103
Gaara

シカマル

71107
Shikamaru

ヒナタ

71110
Hinata

マダラ

71104
Madara

ロックリー

71118
Rock Lee

ガイ

71111
Guy

ミナト

71109
Minato

アスマ

71119
Asuma

ペイン

71108
Pain

キラビー

71116
Killer Bee

水月

71112
Suigetsu

NARUTO SHIPPUDEN

The three play sets allow fans to immerse themselves in the PLAYMOBIL anime universe and take them to iconic locations from NARUTO SHIPPUDEN.



70668 Ichiraku Ramen Shop



70666 Sasuke vs. Itachi



70667 Naruto vs. Pain

For all anime fans, there are favorite NARUTO SHIPPUDEN heroes to collect. Recreate iconic moments from the series, and invent creative scenes of your own.

play.playmobil.com



Playmobil



@playmobil



@playmobil

Great competitions, current information
and more on our social media channels.

Channel Name:
YouTube PLAYMOBIL English

Watch the
PLAYMOBIL
NOVELMORE
Mini-Series on
YouTube

**Exclusive
on
YouTube**



playmobil®

PLAYMOBIL Northern Europe
is a trade name of PLAYMOBIL Benelux B.V.
For further information, please contact:

Email:
northerneurope@playmobil.com

Postal Address:
PLAYMOBIL NORTHERN EUROPE
Postbus 22066
1100 CB Amsterdam
Nederland/The Netherlands

playmobil is a registered trademark.
pronounced: play-mö-beel
© 2023 geobra Brandstätter.
Printed in Germany. Imprimé en Allemagne.
85205/07.23
PLAYMOBIL supports sustainable forest management.
Subject to modifications and amendments.



MIX
Paper from
responsible sources
FSC® C016895

