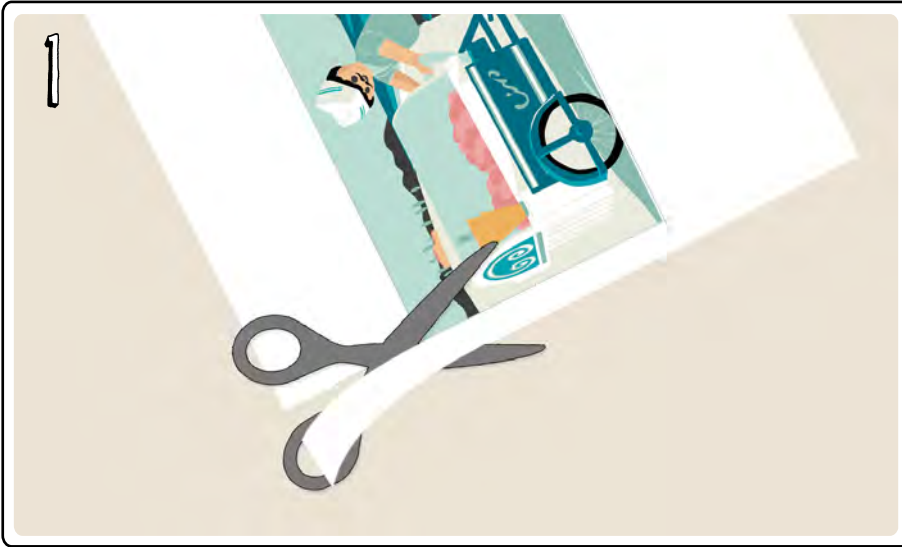


HOW TO MAKE POSTCARDS



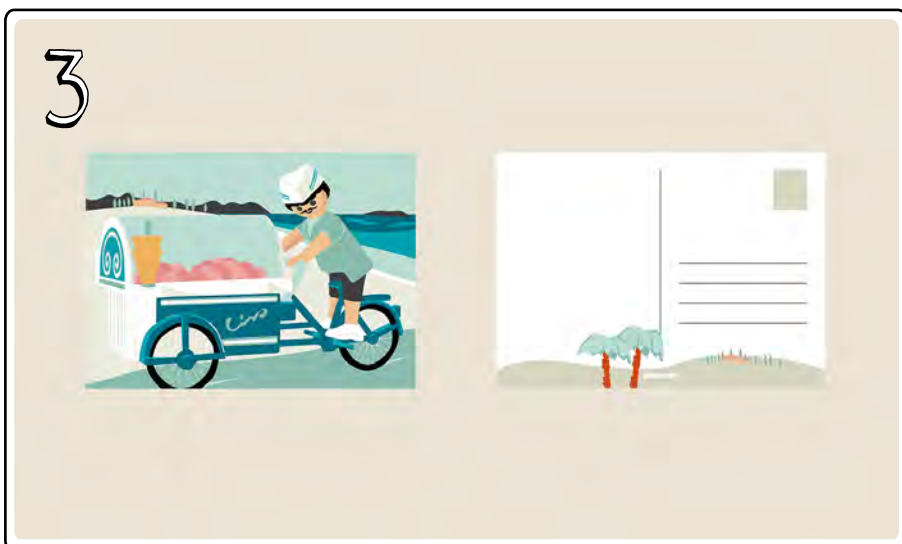
Before you print your postcard, you'll need some thick paper or card stock to ensure that they're sturdy.

First, print the postcard on a colour printer.

Then, cut around the white edge of the images along the outer line.



Fold the card in the middle so that it has a front and a back. Glue the blank inner sides to each other.



Now, you can write the names and addresses of your friends on the back. Don't forget to attach a stamp before you put your postcard in the post. Ask your parents if you are not sure which stamp you will need.

Have fun!
Your PLAYMOBIL team

