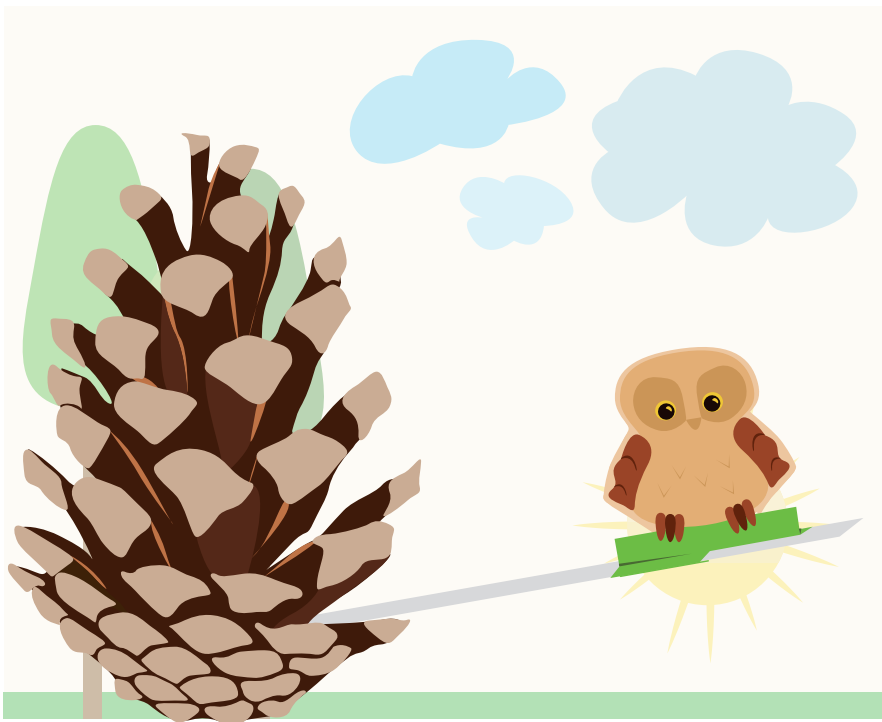
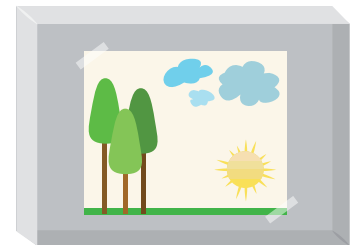


# My weather station



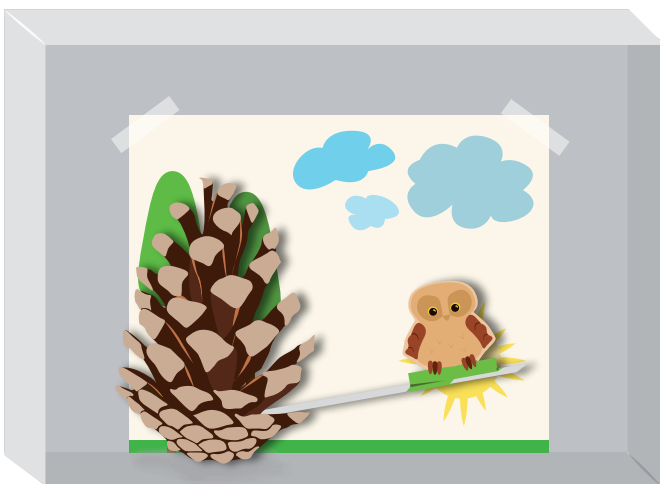
## Checklist:

- Design
- Cardboard strips
- Pinecones
- Glue
- Shoebox
- Background



Select the owl or the racoon, cut out the design and stick it on a cardboard strip (see page 1). Then glue the cardboard strip on one of the lower scales of the pine cone.

Choose one of the two backgrounds (see page 2 & 3). Of course you can also design your own background. The important thing is that a sun can be seen below (for dry weather) and above the clouds (for wet weather). Take a shoebox and glue the selected background on the bottom of the box.



Place the shoebox on the long side.

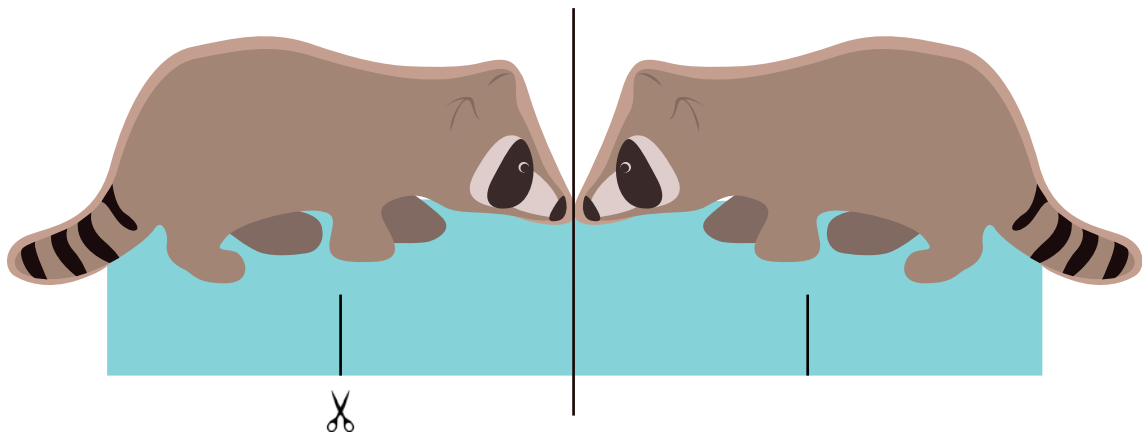
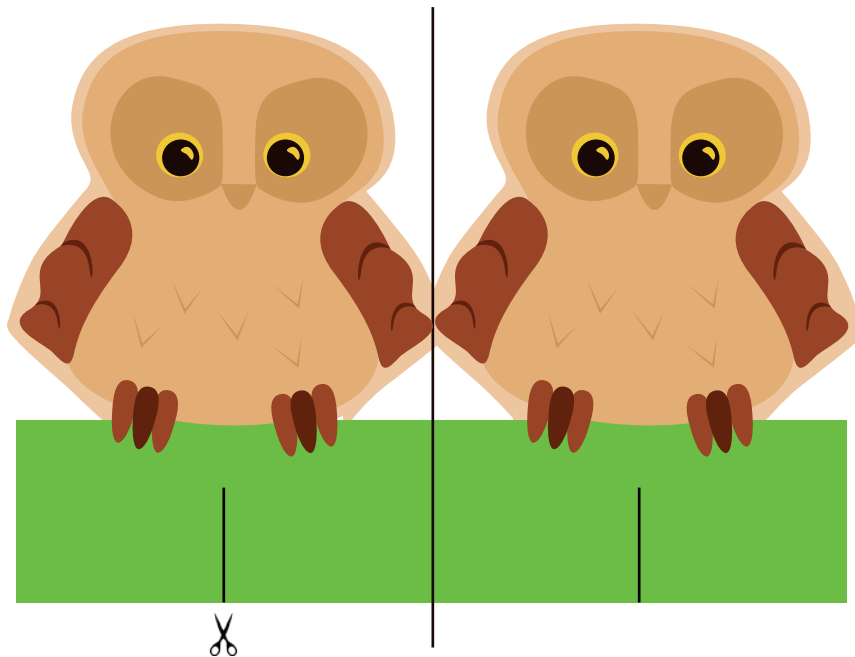
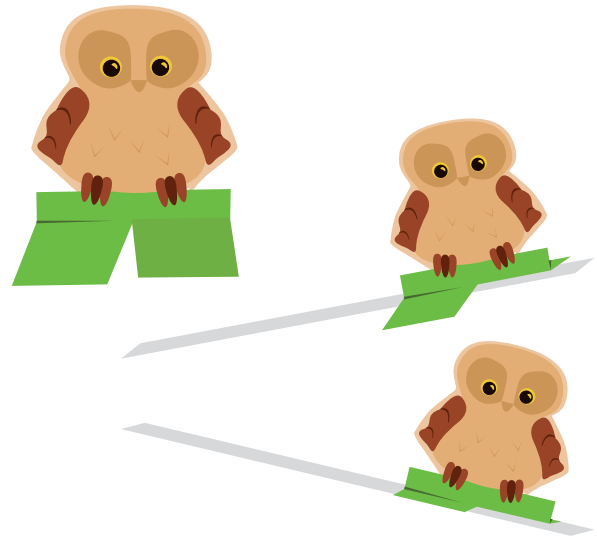
Now attach the pine cone inside in front of the background. Your own little weather station is ready.

### And that's how it works:

In very humid rainy weather the scales of the pine cone close, so the design moves upwards towards the clouds. In dry weather the scales open again and the design descends towards the sun.

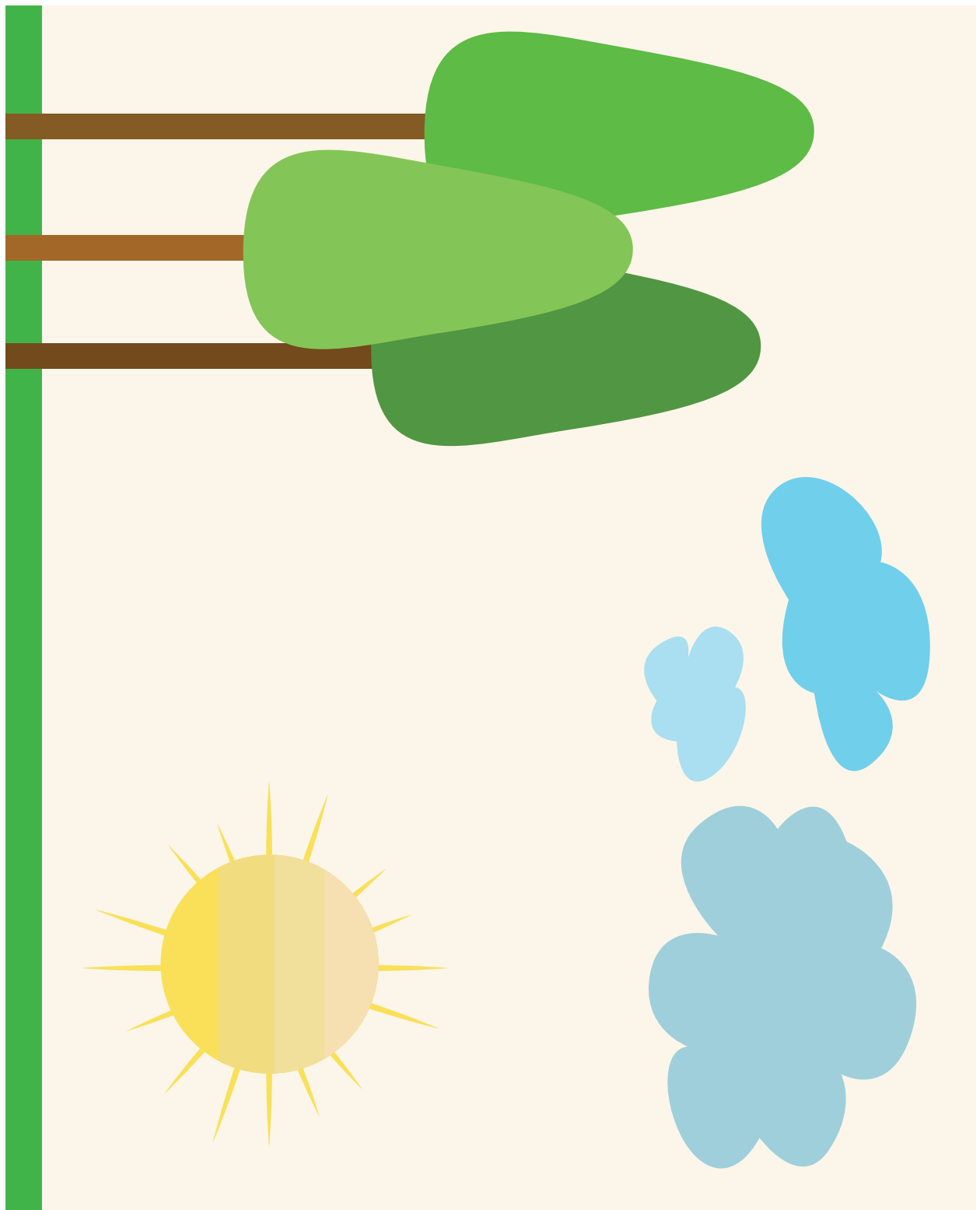
# Sheet 1: Design

- 1 Cut out the design.
- 2 Fold it at the edge.
- 3 Glue the back together.
- 4 Cut it on the mark.
- 5 Now fold the two lower parts in opposite directions.
- 6 Glue the design on a slightly thicker cardboard strip.
- 7 For better grip flap the overlapping ends around the cardboard strip.



# Sheet 2: Background

Cut out the background and glue it on the bottom of the shoebox.



# Sheet 3: Background

Colour and cut out the background and glue it on the bottom of the shoebox.

