

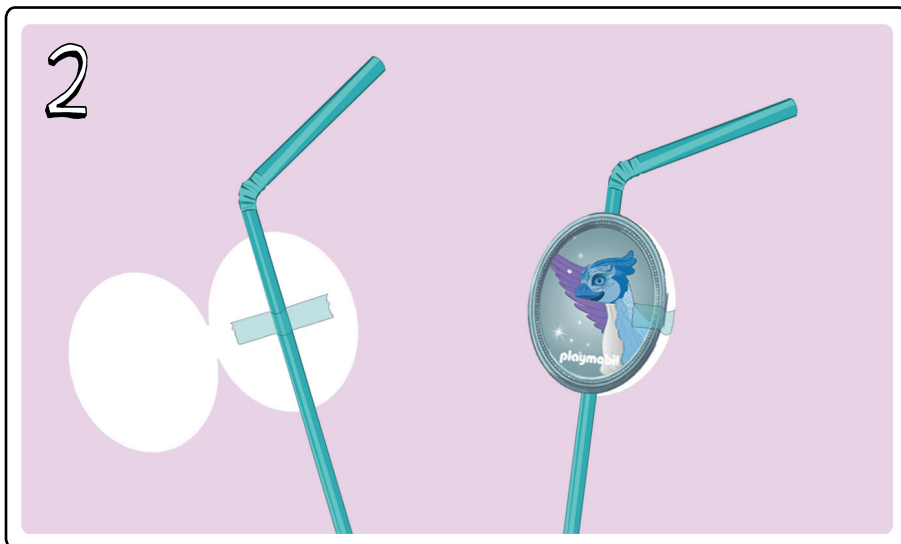
WE ARE CREATING STRAW PARTY BADGES



First of all get thick paper.

Then print the page with the badges on a colour printer. Eight straw stickers are shown on one sheet.

First cut out the badges. Attention there is always a front and back side.



Now glue the stickers to the straw with an adhesive strip, first on the inside and then on the outside.



Now each of your friends can choose their own straw with their favourite character.

Now the party can begin!

Have fun!
Your PLAYMOBIL team

