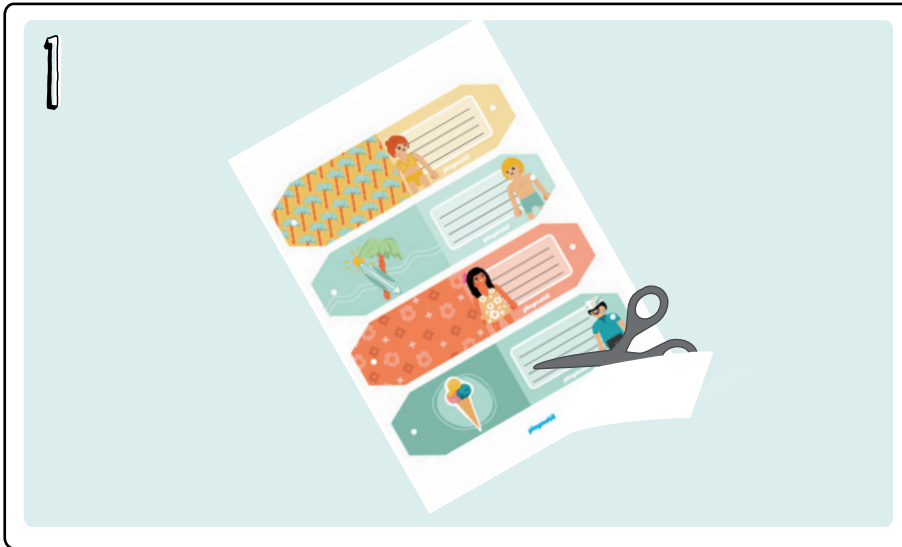
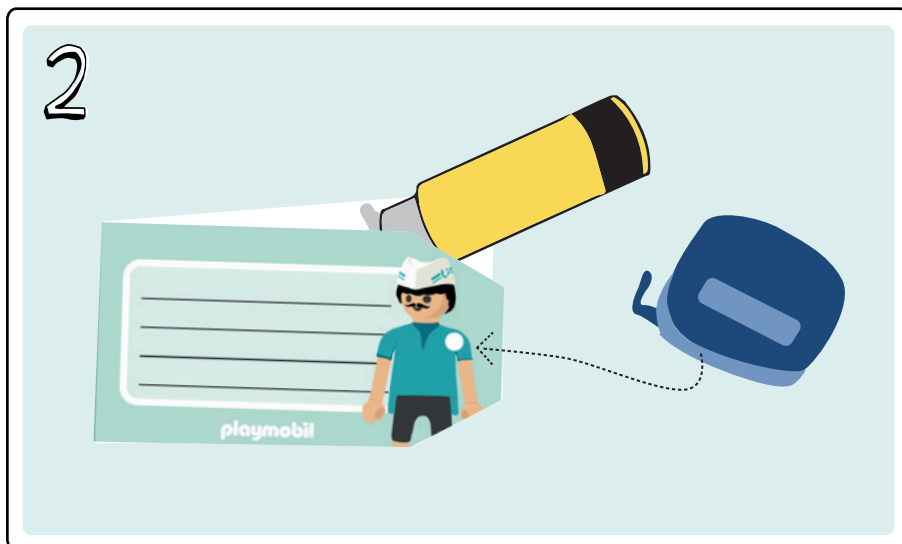


# My luggage tag



It's summer at last! Before going on vacation, some preparations have to be made. To avoid losing your luggage, ensure that your luggage tags are attached at all times. Here's how it works:

Put the thick piece of paper in the printer and print out the page with the pendant templates. Then, cut out the individual luggage tags along the lines.



Next, fold the tag in the middle and glue the blank pages together.

There is a white circle that shows where you will need to cut out a hole. Use a whole punch to cut out the hole in the luggage tag.



You can now label your luggage tag with your address and attach it using a cord or ribbon.

To avoid getting your luggage tag wet, please ask an adult to help you laminate it.

Have a good trip!  
Your PLAYMOBIL team

