

# playmobil®

6669



## WARNING: CHOKING HAZARD

Contains a small ball and small parts.  
Not for children under 3 years.

"Ne concerne que les USA"

Wichtige Unterlagen, bitte sorgfältig aufbewahren!  
Important: Please keep these instructions for future reference!  
Documents importants, à conserver soigneusement!  
Belangrijke documenten, bewaar deze zorgvuldig!



**UK-Distributor:**  
**Playmobil UK Ltd.**  
**Regency House**  
**1 Miles Gray Road**  
**Basildon**  
**Essex**  
**SS14 3RW**  
**UK**

**UK  
CA**

Serviceadressen finden Sie in allen PLAYMOBIL-Prospekten  
Addresses of Customer Service Departments are shown in all PLAYMOBIL catalogues

L'adresse du service consommateurs est indiquée dans tous les catalogues PLAYMOBIL

Troverete gli indirizzi dei centri di assistenza in tutti i cataloghi PLAYMOBIL

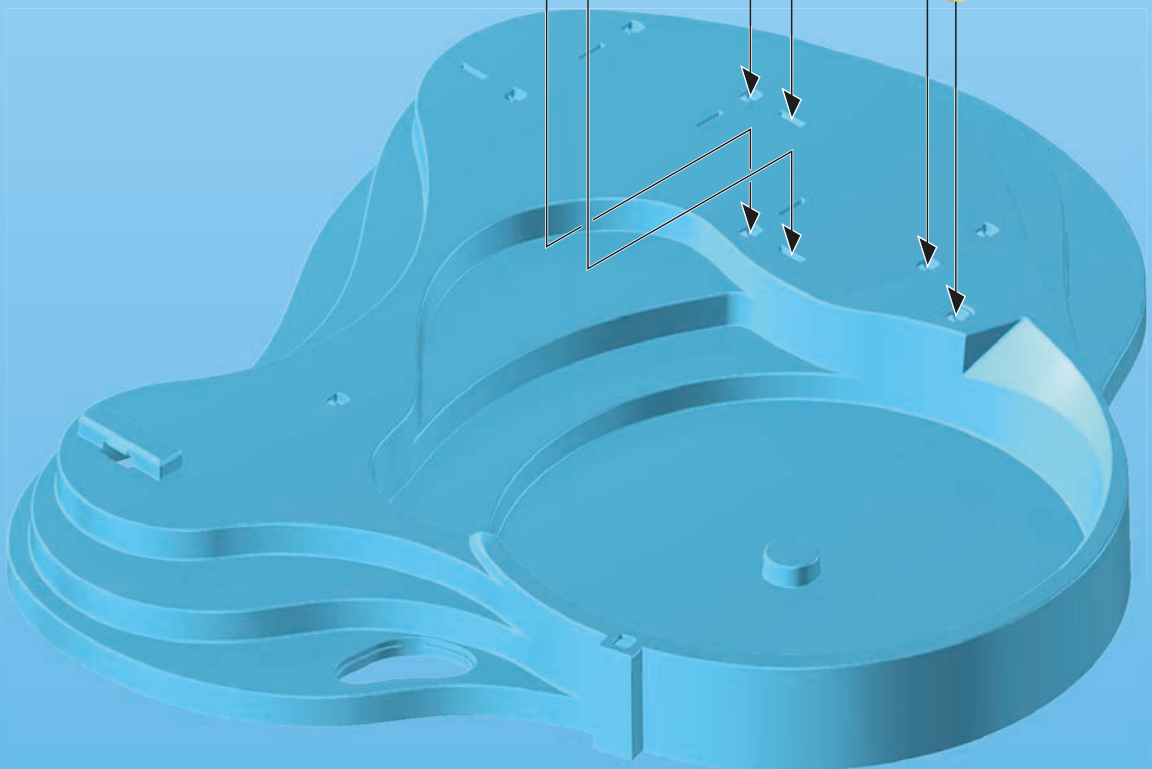
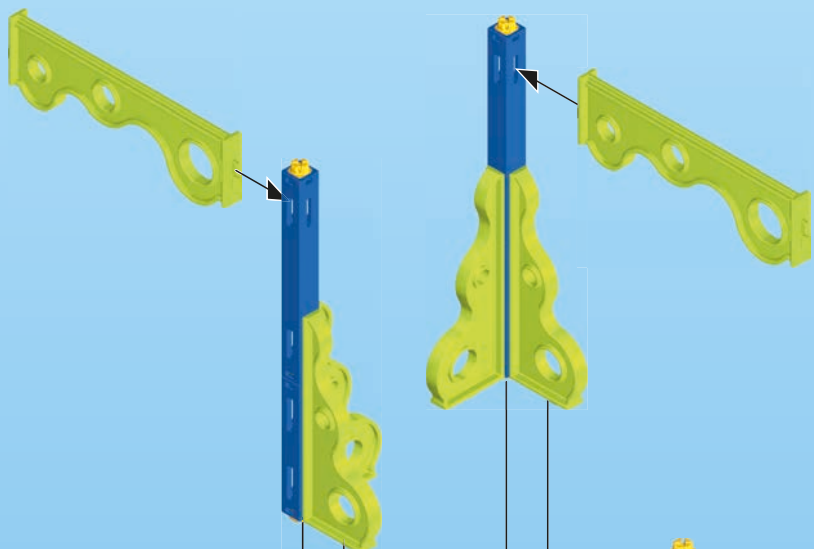
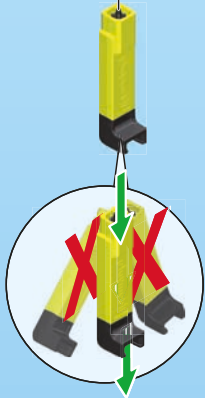
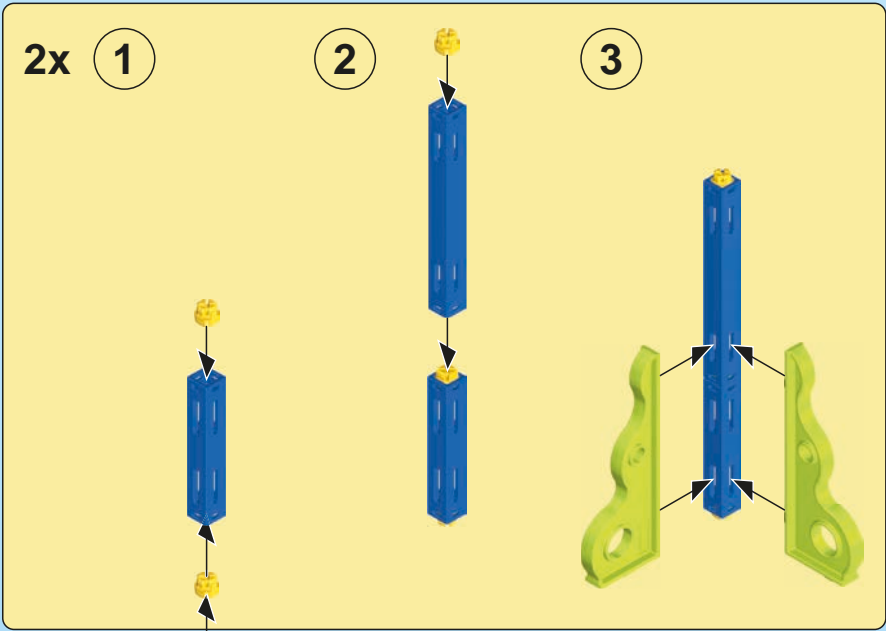
In alle PLAYMOBIL catalogi vindt u het adres van onze klantendienst.

Las Direcciones de los Departamentos de Servicio al Consumidor se encuentran en todos los catálogos PLAYMOBIL

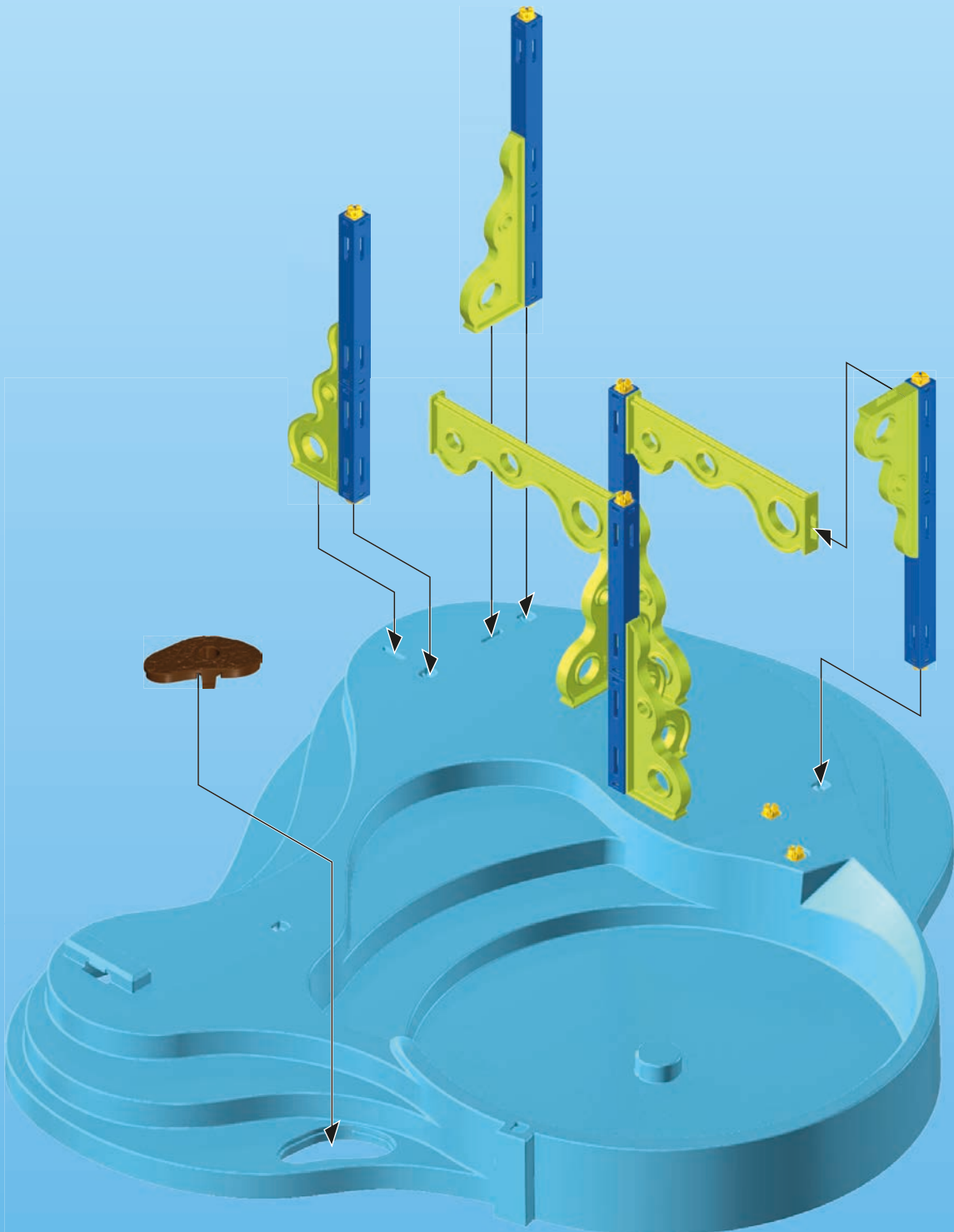
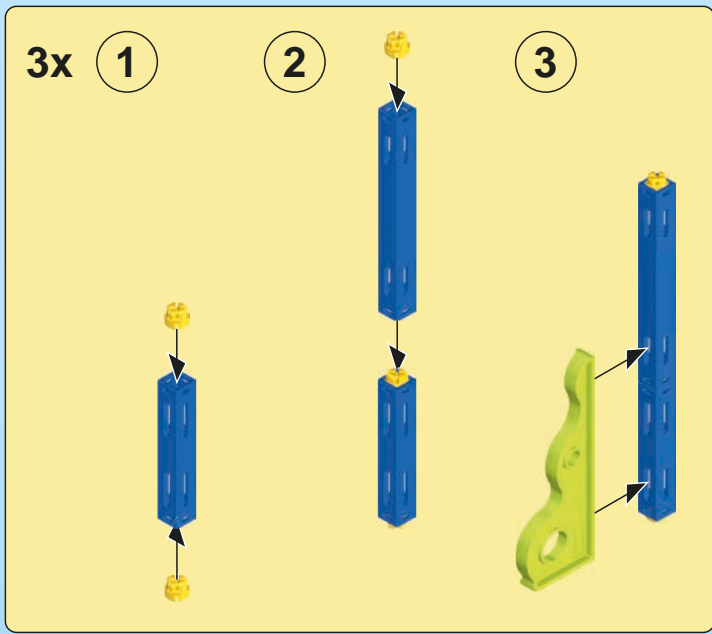
Η διεύθυνση του Γραφείου Εξυπηρέτησης Καταναλωτών PLAYMOBIL βρίσκεται σε όλους τους καταλόγους PLAYMOBIL.

pronounced: plāy-mō-bēēl

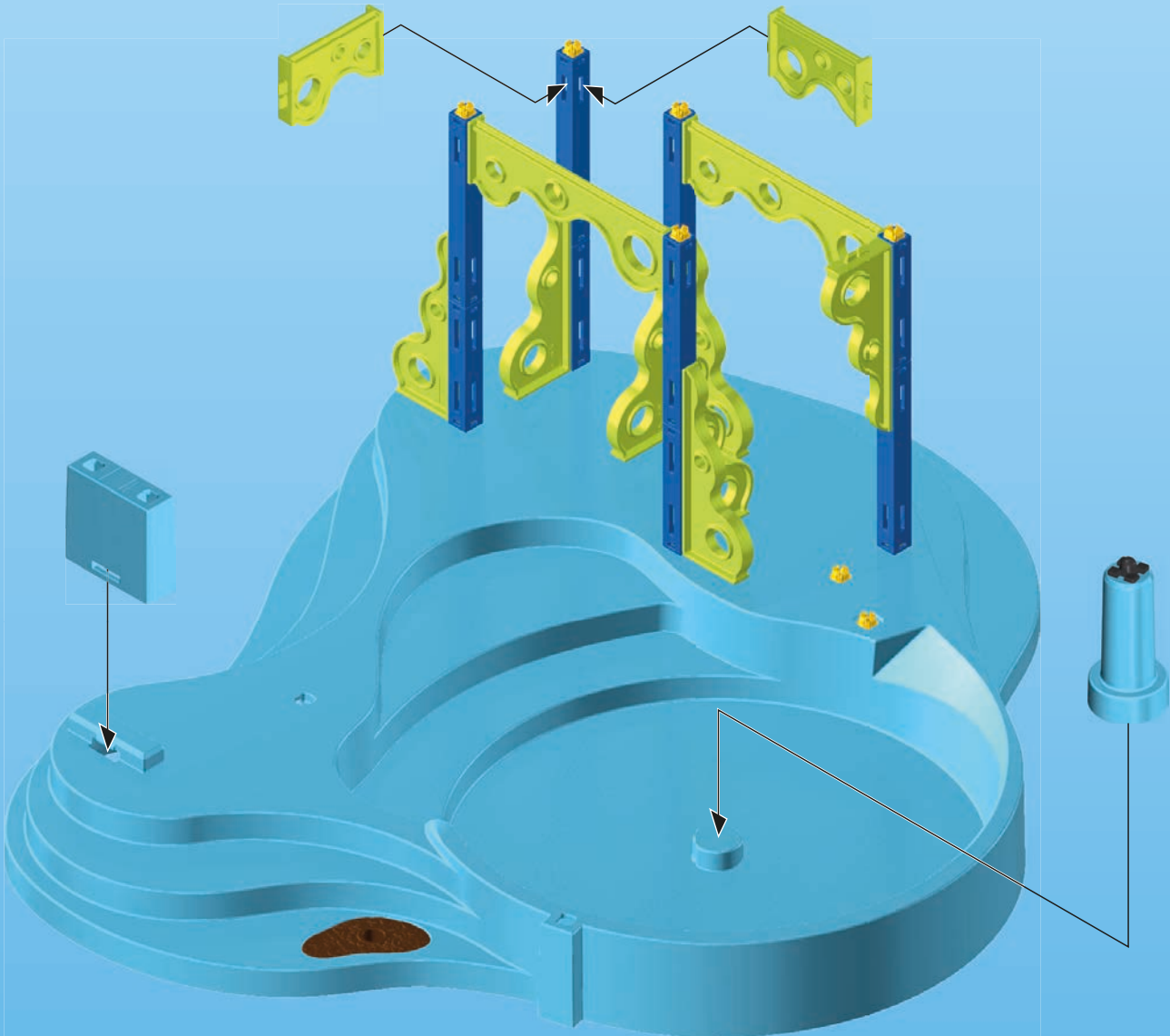
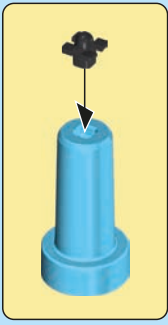
1



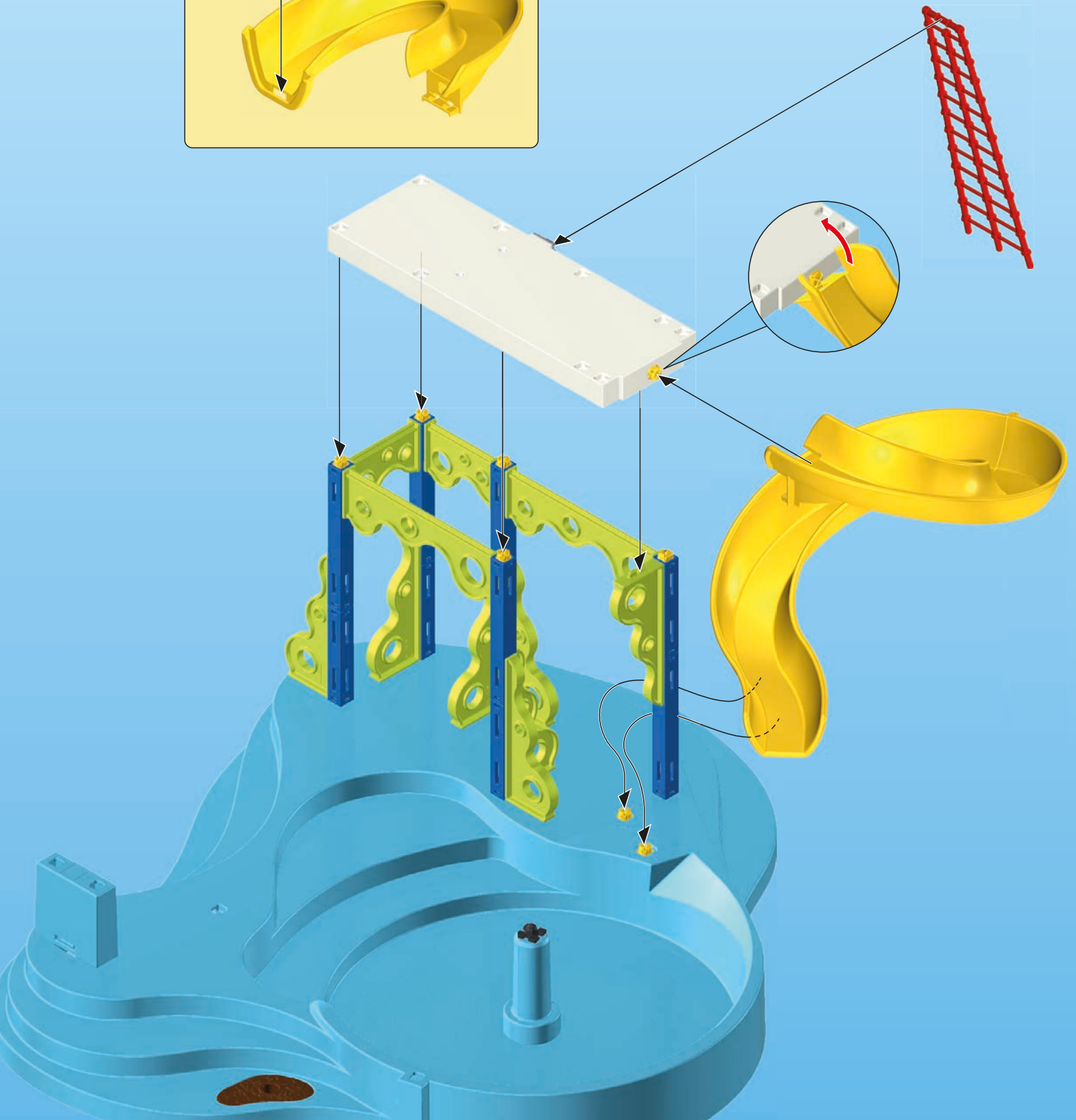
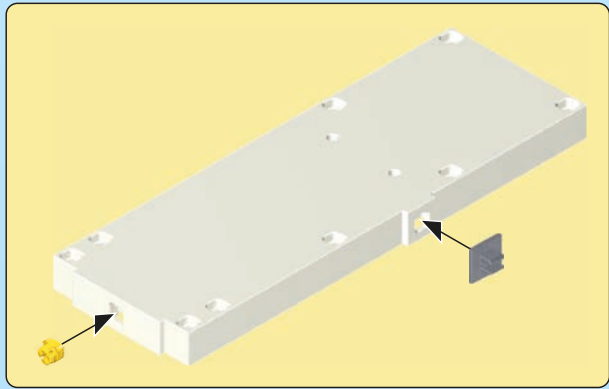
2



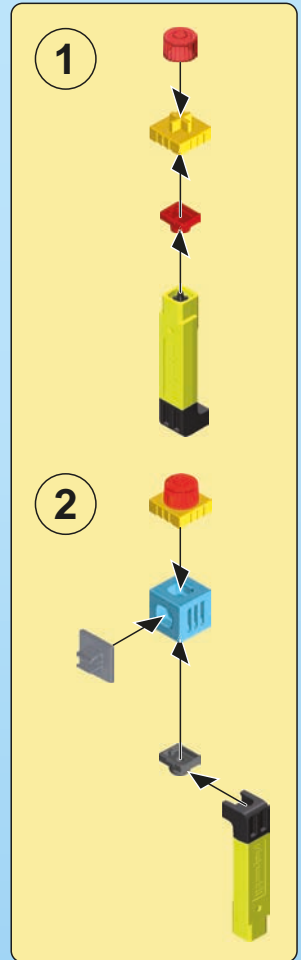
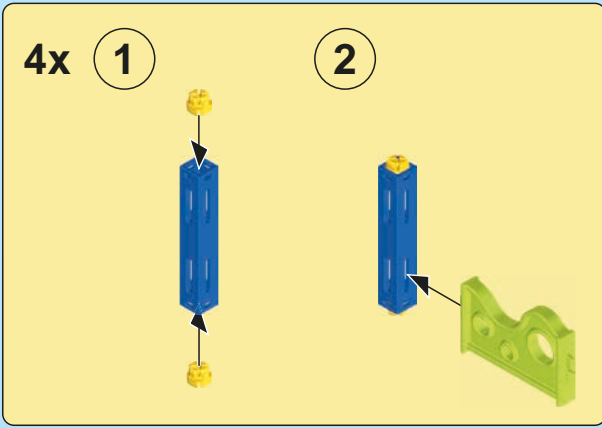
3



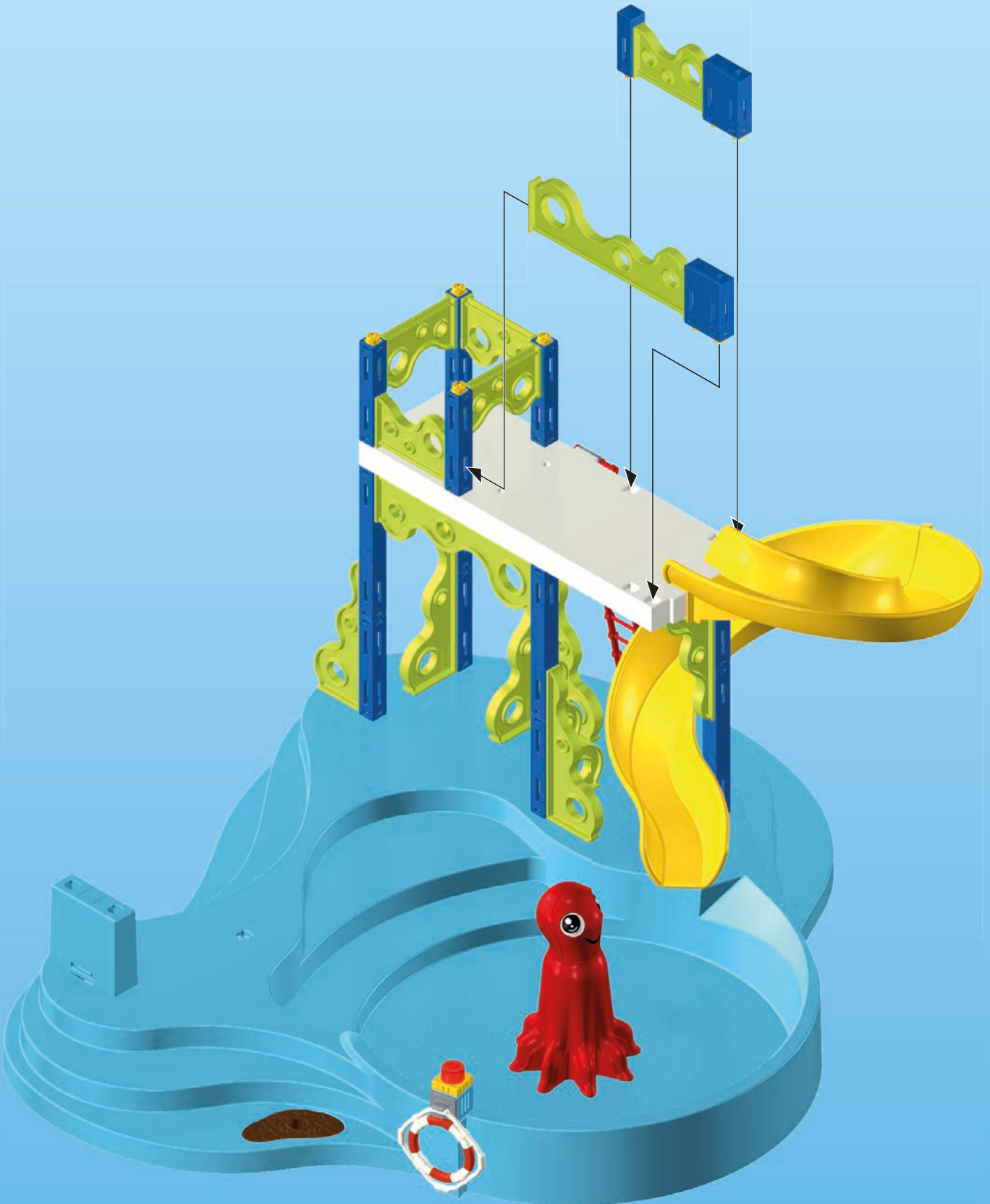
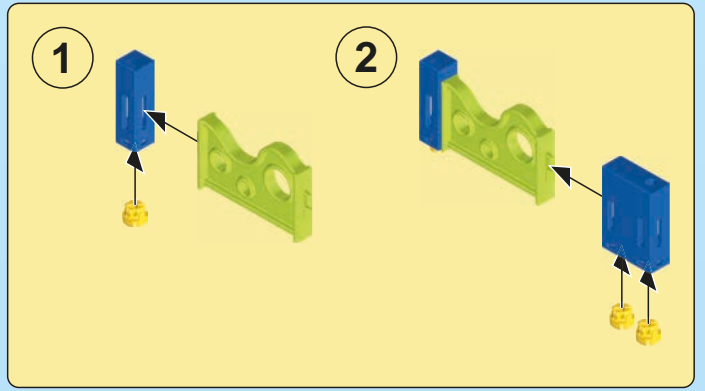
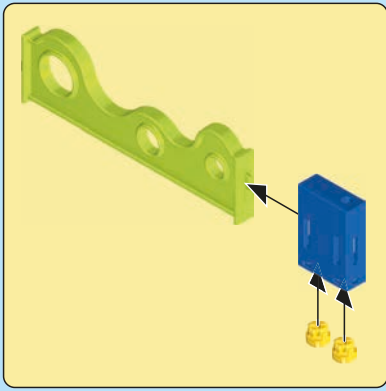
4

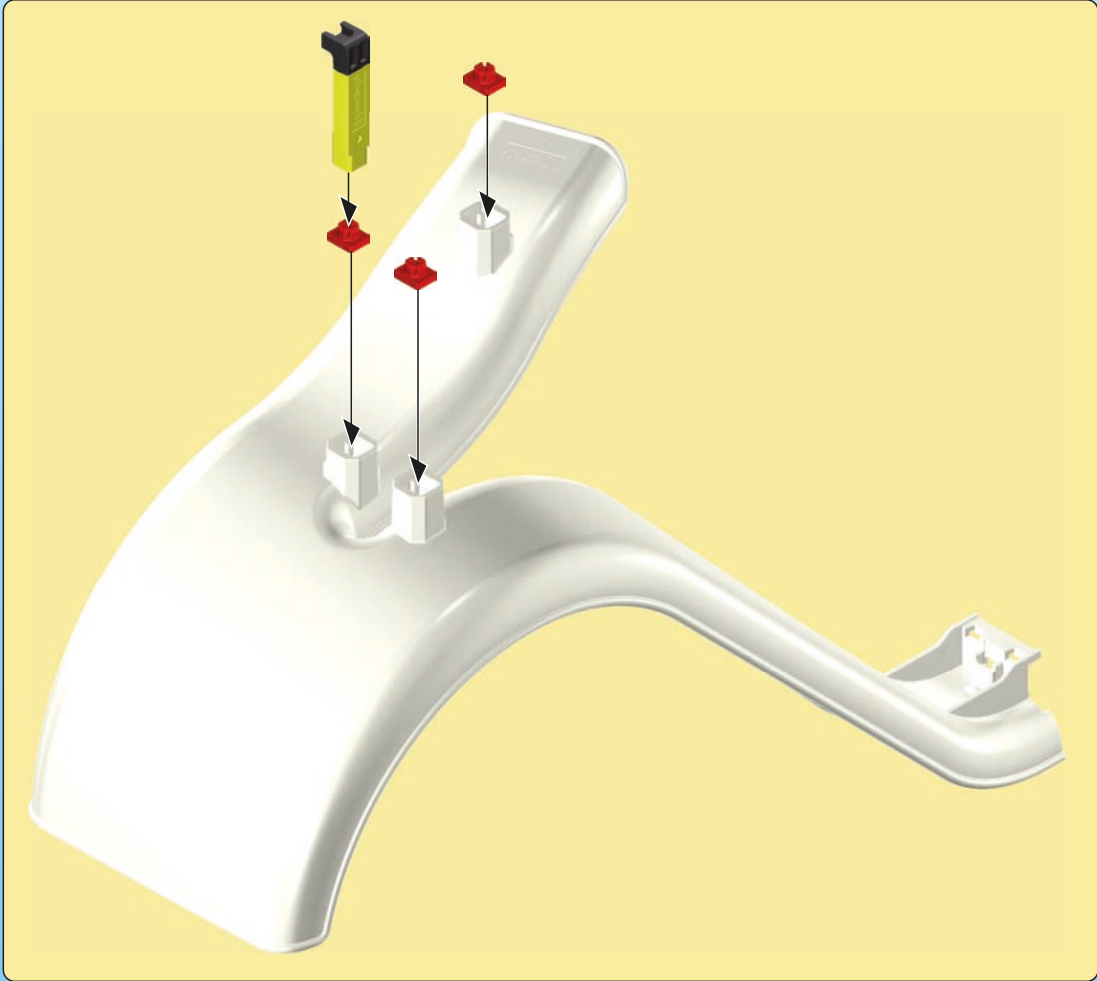
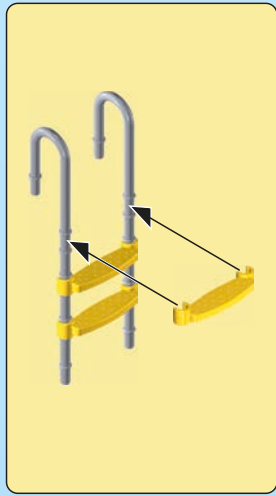
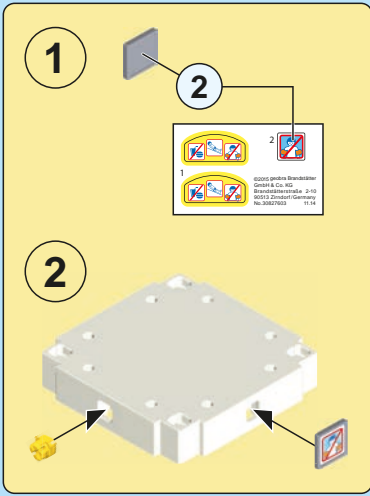


5



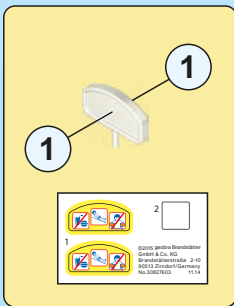
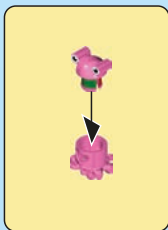
6



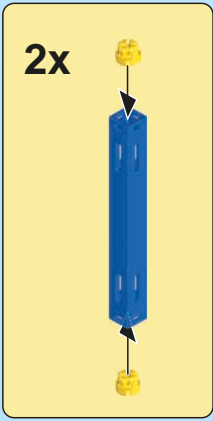
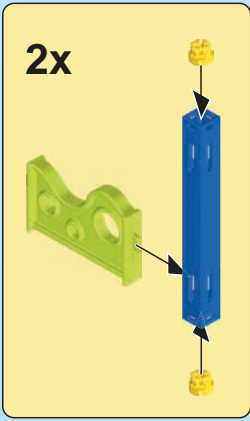




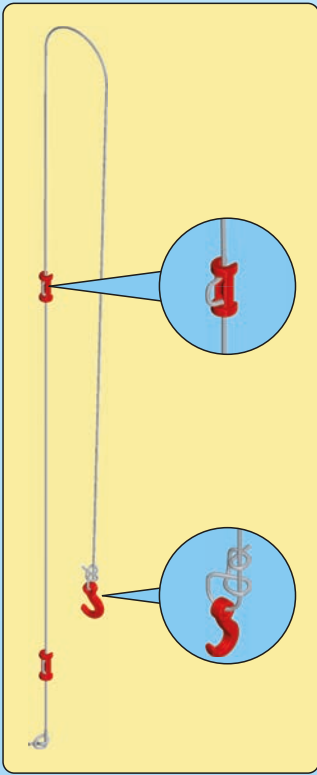
7



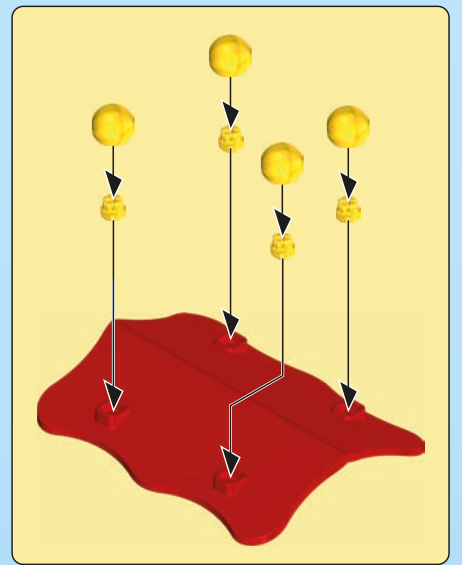
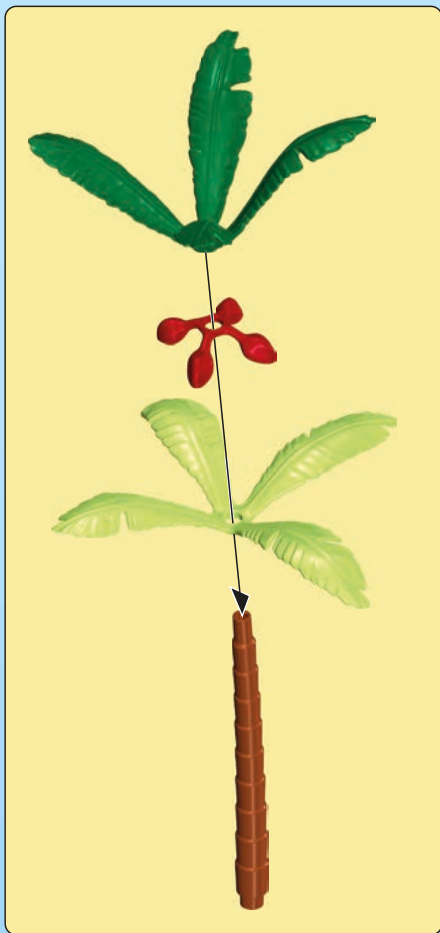
8



9



10



**DE AT CH LU BE** Nur Trinkwasser verwenden. Nach dem Spielen austrocknen lassen.

**US GB CA MT IE** Use only tap water. Dry thoroughly after play.

**FR CA BE LU CH** N'utiliser que de l'eau potable. Faire sécher après chaque utilisation.

**ES MX** Utilizar solamente agua potable. Dejar secar antes de guardar.

**NL BE** Enkel drinkbaar water gebruiken. Na het spelen laten drogen.

**IT CH** Usare solo acqua potabile. Asciugare bene dopo ogni uso.

**PT** Utilizar somente água potável. Deixar secar antes de guardar.

**DK** Anvend kun drikkevand. Lad det tørre ud når du er færdig med at lege.

**NO** Kun drikkevann skal benyttes. Tørk opp etter at leken er ferdig.

**SE FI** Använd endast dricksvatten. Låt torka efter användandet.

**FI** Käytä ainoastaan juomavettä. Anna kuivua leikin jälkeen.

**HU** Kérjük kizárólag ivóvizet használni! Játék után ajánlott a termék kiszáritása!

**GZ** Použítvat jen pitnou vodu. Po hraní nechat vyschnout.

**EE** Kasutada üksnes joogivett! Mängimise järel kuivatada!

**LV** Izmantot tikai dzeramo ūdeni. Pēc spēlēšanās ļaut nožūt.

**LT** Naudokite tik geriamąjį vandenį. Pažaidus, išdžiovinkite.

**SI** V igračo vlivajte le pitno vodo. Po igri naj se igrača posušiti.

**SK** Používať iba pitnú vodu. Po hre nechať vyschnúť.

**PL** Używać tylko wodę pitną. Po zabawie pozostaw do wyschnięcia.

**TR CY** Sadece içme suyu kullanınız. Oyundan sonra kurumaya bırakın.

**GR CY** Χρησιμοποιείτε μόνο νερό βρύσης. Μόλις τελειώσετε, αφήστε το παιχνίδι να στεγνώσει εντελώς.

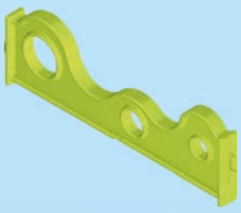
**RO** Se folosește doar apă potabilă. După joacă se lasă să se usuce.

**BG** Използвайте само питейна вода. След игра оставете да изсъхне.

**HR** Koristiti samo pitku vodu. Poslije igranja pustiti da se osuši.

**CN** 仅使用饮用水。玩耍后要干燥。

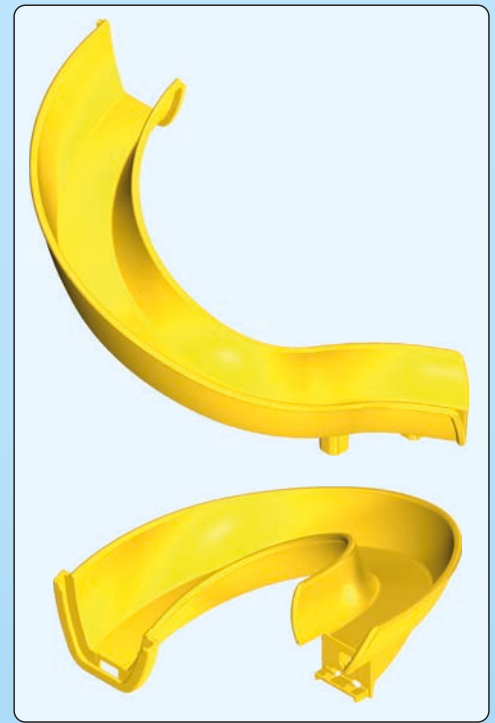




3x 30 23 5503



30 23 5473



30 51 4522



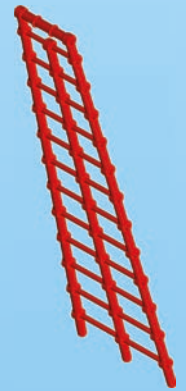
30 21 9240



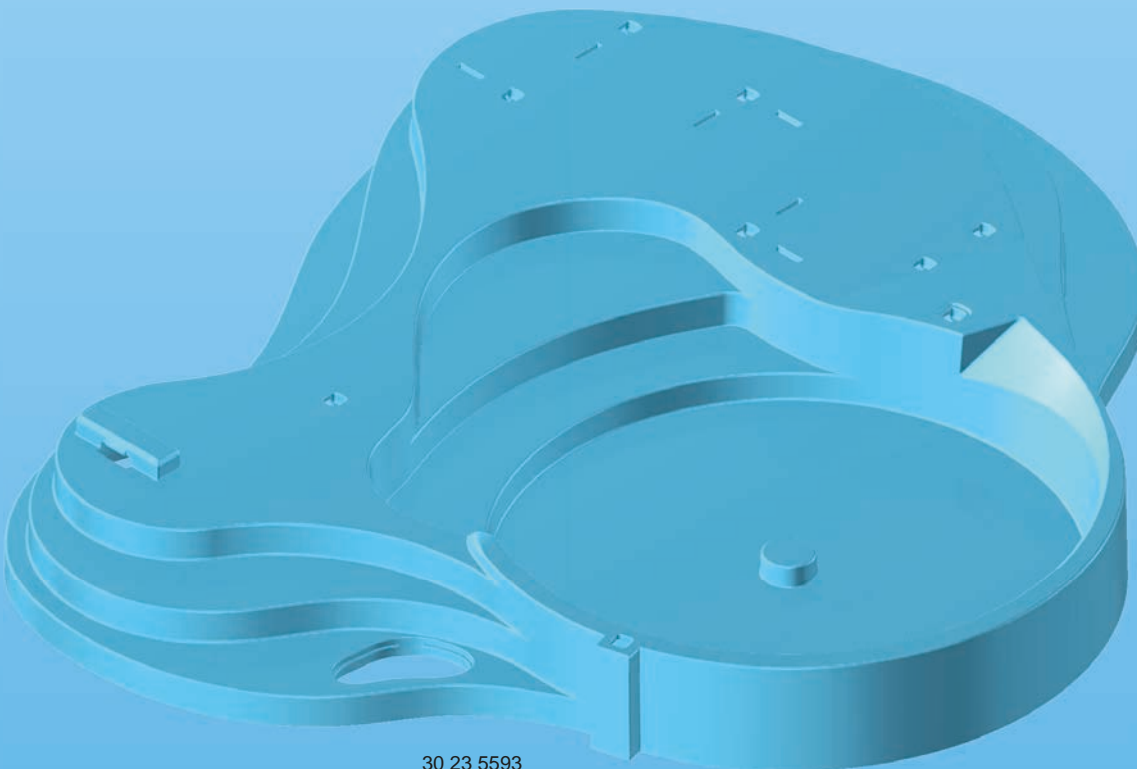
30 26 3030



30 23 5403



30 23 5463



30 23 5593



30 25 9280



30 67 6312



30 23 5453

30 23 5573



30 21 2843



30 23 5583



7x 30 23 5513



2x 30 23 5423



9x 30 23 5533



9x 30 23 5543



30 23 5523



30 23 5493



2x 30 23 5563



9x 30 23 5483



30 82 7603



30 23 5383



30 04 4720



30 23 5603



30 25 9003



30 64 0214



30 88 5870



30 27 6980



3x 30 23 5433



30 23 5333



30 23 5313



4x 30 21 2863



30 23 5393



30 64 0204



30 23 5343



2x 30 23 5303



30 25 7980



30 23 5323



30 02 1220



2x 30 23 5553



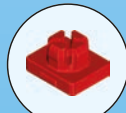
2x 30 27 8120



30 23 5443



48x 30 03 6600



4x 30 09 6900



30 20 0200



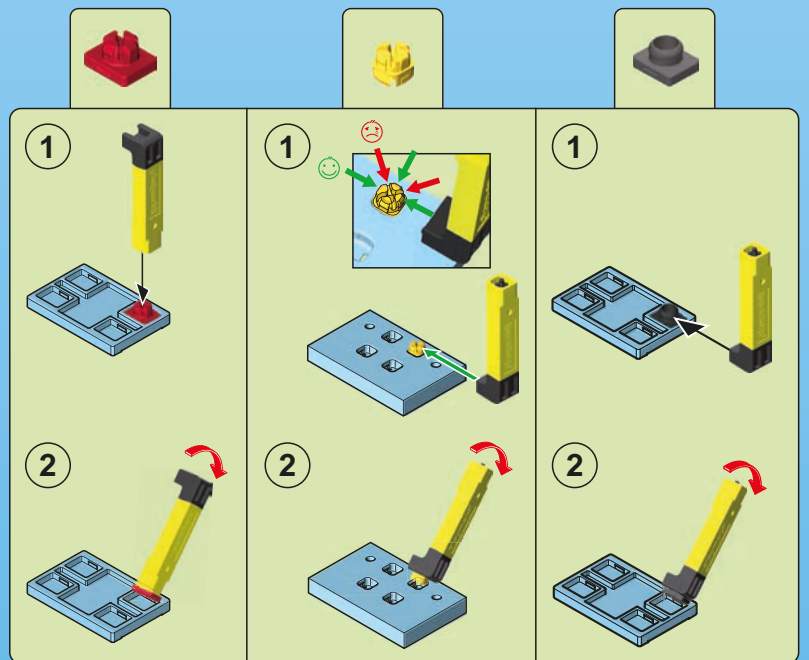
30 00 5353



30 14 4600



30 11 2290



6670 + 6669



1

6669



2



6670



6669



© 2015 geobra Brandstätter Stiftung & Co. KG  
Brandstätterstr. 2-10  
90513 Zirndorf, Germany.  
No. 30 82 9343 11.20

Abbildungen können vom Original abweichen. / Product may differ from image shown.  
Les illustrations peuvent différer de l'original. / Afbeeldingen kunnen verschillen van het werkelijke artikel.

www.playmobil.com